

The **BASS LAKE BULLETIN**

Vol. XXI No.11 The Voice of the Bass Lake Community November 2023

<http://basslakeaction.org>

EDH CSD TO UNDERTAKE EIR FOR BASS LAKE REGIONAL PARK



Image credit - John Davey

By John Davey

At their November 9th Board of Directors Meeting, El Dorado Hills Community Services District (EDH CSD) Directors voted to approve Staff recommendations to conduct an Environmental Impact Report (EIR) of the proposed Bass Lake Regional Park project.

The proposed Bass Lake Regional Park project had been proceeding with an expected Mitigated Negative Declaration to be submitted to satisfy the California Environmental Quality Act (CEQA) element of the approvals and

entitlements process to be decided by El Dorado County. A Negative Declaration or Mitigated Negative Declaration is a short document that describes the proposed project, presents findings related to environmental conditions, includes a copy of the Initial Study which documents the reasons to support the findings, and includes mitigation measures, if any, included in the project to avoid potentially significant effects. A Negative Declaration, or Mitigated Negative Declaration is used when 1) there is no substantial evidence that the project may have a significant effect on the environment; or 2) the Initial

Study identifies potentially significant effects, but revisions to the project agreed to prior to public review would avoid the significant effects, or reduce them to a less-than-significant level, and there is no substantial evidence that the revised project would result in a significant environmental effect.

In recommending an EIR, EDH CSD Staff observed in their report to the Board of Directors that while the initial environmental study from consultant LSA was complete, “A full EIR was recommended by

(Continued on page 2)

BASS LAKE PARK EIR

(con't)

many, and the option was discussed at a Bass Lake Working Group meeting, which there was consensus to go in that direction as well. Staff received a proposal from LSA to pivot to an EIR utilizing as much of the completed environmental analysis as possible. Staff recommends the EIR route because the risk is much less going in this direction. Should the Board approve, this process will begin as soon as possible, beginning with a Notice of Preparation."

It should be noted that back in the 2002-04 timeline, when El Dorado County was considering a park on the 41 acres that they owned at Bass Lake (before selling it the EDH CSD) a Draft Environmental Impact Report was beginning to be prepared for their much smaller park plan.

Consultant LSA's cost estimate to the EDH CSD for shifting from the MND review process to the much more detailed and focused EIR process is \$264,211.00. The scope of work in LSA's EIR process includes:

Update the Arborist Report and Biological Resources Evaluation -
Tree Survey
Arborist Report
Biological Resources Evaluation

Update Air Quality/Greenhouse Gas Emissions Memorandum -

Update Noise Impact Analysis -

Update Traffic Impact Study -

Project VMT (Vehicle Miles Traveled) Analysis
Level of Service Analysis (LOS / traffic)
Other Circulation Network Analysis

Preparing the EIR, Notice of Preparation, Scoping Meeting, Public Noticing, Public Review, Response to Comments, Mitigation Monitoring Reporting Program, and much more.

The Staff Report to the EDH CSD Board of Directors also comments on the District's Master Plan Recommendations, which includes "Incorporate community participation in the master planning and design development process by creating a parks and recreation advisory committee that includes residents, business owners, District Staff, and a Director or representative" and the goal to "Develop Bass Lake as a regional park that is maintained through a regional public/private partnership."

At the Board meeting, EDH CSD Director Steve Ferry noted that the full build out of the park is now in excess of \$90 million. Director Ferry indicated that limiting the programming elements of the park plan and design to items such as playground, education center, and community meeting space, while focusing on preserving and taking advantage of the natural elements of the park site would result in a park that can be used more immediately.

Staff also commented that with the full scope of the park design, build out would obviously be a phased task that would take place over many, many years. Funding the park

build out, which was initially proposed at \$15 million when the EDH CSD first acquired all of the Bass Lake parcels, is still the elusive piece of the Bass Lake Regional Park puzzle - which may come from multiple sources including grants, donations, and other funding sources.

EID PROPOSES RATE INCREASES 2024 - 2028

By John Davey

The El Dorado Irrigation District (EID) Board of Directors approved the 2023 Proposition 218 (proposed rate adjustments) to be issued by mail at its regular meeting on October 23, 2023.

Annually, Combined Water & Wastewater increases are proposed at

- 2024 - 8.4%
- 2025 - 8.0%
- 2026 - 8.1%
- 2027 - 8.3%
- 2028 - 8.5%

For Water, Wastewater & Recycled Water (Purple Pipe) the increases are proposed for

- 2024 - 9.7%
- 2025 - 6.4%
- 2026 - 6.6%
- 2027 - 6.8%
- 2028 - 6.9%

For the average Water & Wastewater customer, the bimonthly

(Continued on page 3)

EID PROPOSES RATE INCREASES 2024 - 2028 *(con't)*

(every 2 month) bill impacts are calculated as:

- 2024 - \$19.61
- 2025 - \$20.13
- 2026 - \$22.24
- 2027 - \$24.60
- 2028 - \$27.22

EID Customers/Property Owners were sent by mail on October 26, 2023, a Proposition 218 Notice (Prop. 218) of proposed rate adjustments increases.

The Prop. 218 Notice includes information on proposed rate adjustments, reasons for the rate adjustments, scheduled dates for the public to attend open house workshops, the date of the scheduled public hearing which is when the Board can take action on adopting the rate adjustments, and information on how you may protest any changes.

For the average Water & Wastewater customer, the bimonthly (every 2 month) bill impacts are calculated as:

- 2024 - \$28.11
- 2025 - \$20.29
- 2026 - \$22.20
- 2027 - \$24.31
- 2028 - \$26.66

HOW TO PROTEST

To protest the proposed new rates Under Proposition 218, the owner of record for a parcel(s) that is subject to the proposed rate increases can submit a written protest against the proposed rate increases received by the District at or before the time set for the public hearing on December 11, 2023, at 9:00 a.m.

If a majority of affected property owners submit written protests, the proposed rate increases will not go into effect and the reconstruction work on the infrastructure will be impacted.

The written protest must identify the parcel(s) in which the party signing the protest has an interest. The best means of identifying the parcel(s) is by the Assessor's Parcel Number (APN). If the party signing the protest is not shown on the last equalized assessment roll of El Dorado County as the owner of the parcel(s), the protest must contain or be accompanied by written evidence that such party is the owner of the parcel(s), unless the protest is by a tenant who pays the utility bills.

In rental situations where the tenant pays the utility bills, the property owner is responsible for supplying the tenant with this notice. Tenants who pay the utility bills can submit a written protest. One written protest per parcel will be counted. Please mail or hand-deliver written protests (specifying which rate increases are being protested) to: Clerk to the Board, El Dorado Irrigation District, 2890 Mosquito Road, Placerville, CA 95667.

Emailed, faxed, or electronic protests will NOT be accepted.

There is a 120-day statute of limitations for challenging any new, increased, or extended fee or charge.

EID held public meetings on November 13th and 16th in Cameron Park, and at EID Headquarters in Placerville.

EID plans bond issues of \$60 million in 2024 and \$120 million in 2027.

(Continued on page 4)

Proposed Rate Adjustments for 2024 - 2028

Effect of Rate Adjustments on Average EID Residential Bimonthly (Two Month) Bills

Bimonthly Bill Impacts	2024	%	2025	%	2026	%	2027	%	2028	%	Average
Water (Only)	\$16.81	13.7%	\$16.73	12.0%	\$18.74	12.0%	\$20.98	12.0%	\$23.50	12.0%	12.3%
Wastewater (Only)	\$2.80	2.5%	\$3.40	3.0%	\$3.51	3.0%	\$3.61	3.0%	\$3.72	3.0%	2.9%
Combined Water and Wastewater	\$19.61	8.4%	\$20.13	8.0%	\$22.24	8.1%	\$24.60	8.3%	\$27.22	8.5%	8.3%
Water, Wastewater & Recycled	\$28.11	9.7%	\$20.29	6.4%	\$22.20	6.6%	\$24.31	6.8%	\$26.66	6.9%	7.3%

EID PROPOSES RATE INCREASES 2024 - 2028 (con't)

The two bonds will finance the replacement of the Sly Park intertie, water treatment plant improvements, flume replacements, water storage tank rehabilitation and replacement of the Silver Lake Dam.

Projected outstanding debt will be \$436.8 million in 2024, \$417 million in 2025, \$396.4 million in 2026, \$495 in 2027 and \$472.7 million in 2028. ~

60TH EDH FIRE DEPT SANTA RUN DECEMBER 5th 5:20PM at OAK KNOLL PARK ONLY TWO BASS LAKE AREA SANTA STOPS THIS YEAR!

By John Davey

Come celebrate the 60th(!) El Dorado Hills Fire Department Santa Run!

This year the [EDH Fire Department Santa Run Holiday Heroes Food & Toy Drive](#) is coming to Bass Lake at 5:20PM on TUESDAY DECEMBER 5th at Oak Knoll Park in The Hills of El Dorado village as THE VERY FIRST STOP!!!

The Santa Stop at Oak Knoll Park is earlier than past years, so make sure to arrive on time. The second stop in the Bass Lake Community is at Laurel Oak Parks at 6:00PM

* ---- There is NO Santa Run Stop in Bridlewood Canyon this year ----*

Oak Knoll Park and Laurel Oaks Park are the only two stops in the Bass Lake area for 2023.

Santa, Mrs. Claus, and the EDH Fire Department Elves will have candy canes for the kids.

PLEASE: One photo per family with Santa - all kids in one photo!
Rain or shine!

Santa is collecting unwrapped toys for children at Shriners Hospital and Food donations for the El Dorado Food Bank at the Santa Stops. You can also donate online, or with a QR Code.

Want to help out at Oak Knoll Park?
Contact Oak Knoll Park Santa Ambassador John Davey at basslakemembers@gmail.com

**BREAKING NEWS:
EDH CSD TO
PURCHASE 55 ACRE
PORTION OF OLD
EXECUTIVE GOLF
COURSE**

**OPTION REMAINS TO
PURCHASE REMAINING 41
ACRES**

By John Davey

A special meeting of the Board of Directors of the El Dorado Hills Community Services District (EDH CSD) on Monday November 20th focused on an Agenda Item that was entitled "Preservation, Purchase, and Sale of the Old Executive Golf Course."

million. Of those 55 acres, 40 acres will be the Golf Course property north of Serrano Parkway, as well as south of Serrano Parkway to include roughly 15 acres containing the old Golf Course Clubhouse, the parking lot, and the tunnel under Serrano Pkwy that connects the properties.

As part of the proposal, Serrano Associates will also be donating another 11 acres to the CSD that connects to the EDH CSD Archery Range (EDH Bowmen) and removing a reversionary clause from when Parker Development donated the land to the CSD for the Archery Range. The reversionary clause provided that the property would revert to Parker Development ownership if it were not used for archery purposes. The 11 acres is

The sale offer also includes preserving the entirety of the Old Golf Course property (all 99 acres) under the existing Recreational Facility - H zoning (recreational high intensity) in perpetuity, with a deed restriction. This prevents rezoning the property, and would only allow development on the remaining 41 acres of the old Golf Course Property that is consistent with the Recreational Facilities - H Zoning.

As part of the sale agreement, Serrano Associates will allow the EDH CSD and the EDH Community 18 months to obtain funding or financing to purchase the remaining 41 acre portion of the EDH Golf Course property south of the golf course clubhouse to



As the second item on the Agenda, the EDH CSD Board voted to purchase 55 acres of the Old Executive Golf Course for \$10

located along the east side of El Dorado Hills Blvd, on the northeast corner of Wilson Way - directly across from EDH Fire Station 85.

Highway 50. If the EDH CSD, or the El Dorado Hills Community, is

(Continued on page 6)

EDH CSD TO PURCHASE 55 ACRE PORTION OF OLD EXECUTIVE GOLF COURSE *(con't)*

unable to fund or finance the purchase of the remaining EDH Golf Course Property, then Serrano Associates will have the right to develop the remaining 40-plus acres south of Serrano Pkwy under the Recreational Facilities - H zoning.

At the same time, Serrano Associates will continue with the pursuing the Central El Dorado Hills Specific Plan project and entitlements through the Board of Supervisors, in the event that the EDH CSD Board of Directors are unable to purchase the property, or the very short escrow process (presumed to be seven weeks) results in the EDH CSD not purchasing the property.

At the November 13th El Dorado Hills Community Council Meeting, District 1 Supervisor John Hidahl announced that County Planning Staff have identified a possible Board of Supervisors Meeting in El Dorado Hills at Holy Trinity Catholic Church for the CEDHSP project, that would tentatively be scheduled for January 29, 2024.

The vote of the EDH CSD Board of directors to proceed with the \$10 million purchase of the 55 acres of Old Executive Golf Course property also included directions to staff to return to the Board with financing options for the initial 55 acre purchase of land included in the Agreement. An additional direction to staff was to return to the Board

Bass Lake Bulletin

with local funding source options, including a publicly funded bond measure, to further explore acquisition of the 41 acre "Option Property".

THE IMPORTANCE OF FLUE, DAMPENER, AND CHIMNEY CLEANING

By John Davey

As the days grow colder and the allure of a warm, crackling fireplace intensifies, it's crucial to remember that fireplaces, while a source of comfort and ambiance, also demand careful attention to ensure safety. Three critical components play a pivotal role in maintaining fireplace safety: the flue, the dampener, and regular chimney cleaning.

The Flue: A Pathway for Smoke and Gasses

The flue, a vertical duct connected to the firebox, serves as the primary passage for smoke and combustion gasses to escape from the fireplace and exit the building. A properly functioning flue is essential for preventing the buildup of harmful gasses, including carbon monoxide, within the home.

Regular inspection and maintenance of the flue are crucial to ensure its effectiveness. Cracks, blockages, or obstructions in the flue can hinder the proper flow of gasses, leading to the accumulation of carbon monoxide, a colorless, odorless gas that can cause serious health problems, including dizziness, headache, and even death.

The Dampener: Controlling Airflow and Preventing Backdrafts

The dampener, a valve located at the top of the flue, regulates airflow within the fireplace and chimney system. A properly functioning dampener plays a critical role in preventing backdrafts, which occur when outside air enters the fireplace and forces smoke and gasses back into the home.

Backdrafts can be particularly dangerous as they can introduce carbon monoxide into the living space. Therefore, it's essential to ensure that the dampener is in good working condition and is closed whenever the fireplace is not in use.

Chimney Cleaning: Removing Soot and Creosote Buildup

Regular chimney cleaning is paramount for maintaining fireplace safety. Over time, the burning of wood or gas in the fireplace can cause the accumulation of soot and creosote, a highly flammable substance, on the chimney's interior surfaces.



(Continued on page 7)

FLUE, DAMPENER, AND CHIMNEY CLEANING *(con't)*

Creosote buildup can significantly reduce the chimney's efficiency and increase the risk of chimney fires. A professional chimney sweep should inspect and clean the chimney annually, or more frequently if the fireplace is used heavily.

Additional Fireplace Safety Measures

In addition to maintaining the flue, dampener, and chimney, several other safety measures should be

taken when using a fireplace:

- Use only dry, seasoned firewood.
- Never use flammable liquids, such as gasoline or kerosene, to start or maintain a fire.
- Keep flammable materials, such as furniture, curtains, and decorations, away from the fireplace.
- Never leave a burning fire unattended.
- Install a carbon monoxide detector in your home.



Remember, fireplace safety is not just about enjoying the warmth and ambiance of a crackling fire; it's about creating a safe and healthy environment for your family and

Bass Lake Bulletin

home. By following these simple guidelines and prioritizing regular flue, dampener, and chimney maintenance, you can ensure that your fireplace remains a source of comfort and joy for many seasons to come.

CHP BOOSTING EFFORTS TO STOP DISTRACTED DRIVERS

California Highway Patrol News release

Every year, thousands of people are seriously injured or killed statewide in vehicle crashes caused by distracted drivers. To address the problem, the California Highway Patrol is launching a statewide campaign to educate adult drivers about the dangers of distracted driving and boost enforcement efforts, all funded by a \$350,000 federal grant.

The yearlong education and enforcement initiative continues through Sept. 30, 2024. Throughout the year, CHP officials note at least 90 enforcement operations targeting adult distracted drivers will take place. In parallel with a CHP program targeted at teen drivers, the adult distracted driving campaign also includes 300 traffic safety presentations statewide.

“The CHP encourages drivers to make the conscious decision to drive distraction free every time they get behind the wheel of a vehicle,” said CHP Commissioner Sean Duryee. “Every distraction,

even for just a few seconds, increases your chances of being involved in a crash. Ultimately, it is never worth the potentially devastating consequences.”

With multiple modes of communication and instant entertainment, cell phone use is the biggest driver distraction. Data reveals between 2019 and 2021, there were a total of 6,343 fatal and injury crashes within CHP jurisdiction stemming from distracted driving. During those same years, CHP officers issued more than 200,000 citations to drivers violating California’s hands-free law.

Some of the most common types of adult distracted driving includes texting, talking on a cell phone, eating, grooming, operating a navigation system and adjusting the radio.

Funding for this program is provided by a grant from the California Office of Traffic Safety through the National Highway Traffic Safety Administration.



**HOUSEHOLD
HAZARDOUS WASTE
COLLECTION EVENT**

Press Release

Saturday, December 2nd from 9 am to 12 pm

Fire Station #86
3670 Bass Lake Road, El Dorado Hills

By Appointment Only

please email hhw@edcgov.us or call 530-621-5300 to schedule an appointment.

All normal limits and restrictions apply – 15 gallons or 125 pounds per household, the limit of 10 fluorescent bulbs per household, no business waste accepted, and no out-of-county waste accepted; please bring proof of residency to your appointment.

No-Contact HHW Drop-Off

The following procedures have been implemented for the HHW events. Please read and follow these instructions for no-contact drop-off:

The facility is now open by appointment only; appointments can be requested by calling (530) 621-5300 or emailing a request to hhw@edcgov.us. Participants will be sent a confirmation email prior to the collection event with their appointment time. The facility is now open by appointment only; appointments can be made by calling (530) 621-5300 or emailing a request to hhw@edcgov.us. Appointments are required to ensure that EMD stays within the permitted

amount of waste collected and to minimize traffic control.

HHW Drop-off is for El Dorado County residents only. Proof of residency is required.

Hours of operation will remain the same, 9 am to 12 pm. Collection events will only take place on scheduled Saturdays, please check the county website for updated information regarding upcoming days of operation. Event cancellations due to weather, holidays, or other emergencies are still in effect. Normal load limits and restrictions will also remain unchanged. “

When you arrive at the site, **STAY IN YOUR VEHICLE**. It is state law and part of our protection plan to help ensure non-contact drop-off, our attendants will unload your car for you.

For the time being, we are limiting appointments to the first 60 applicants per HHW event, or until full. (This number is subject to change as the events are refined)

The HHW events are appointment-only, any resident that arrives without an appointment will be turned away. However, you can always utilize the HHW collection site/materials recovery facility at 4100 Throwita Way, Placerville, CA - Friday-Sunday from 9 am to 4 pm. For more information on that site, call (530) 626-4141.

The Following Items are Accepted

Paint: latex, water- and oil-based paints (paint cans should be consolidated. Empty dry cans can be disposed of in your regular

garbage bin);
Used motor oil, gasoline, antifreeze, brake fluid, and other motor vehicle liquids;
Solvents and paint removers;
Adhesives and sealants;
Pesticides, herbicides, and fertilizers;
Photo processing chemicals;
Household cleaners;
Pool chemicals;
Aerosol cans;
Home-generated sharps (must be in an approved sharps container);
Over-the-counter pharmaceuticals (no controlled substances are accepted);
Universal Waste:
Batteries (all types),
fluorescent lights (limit 10 per trip);
mercury-containing devices;
Electronic Waste (E-Waste);

Most products labeled CAUTION, WARNING, DANGER, or POISON.

There are limits on the amounts of household hazardous waste you can legally transport:

You may transport up to 15 gallons or 125 lbs. of waste per household.

Remember to place all items in the trunk and away from all passengers. Do not commingle any household hazardous waste products.

Wastes should be in the original containers.

If you have any questions, please contact El Dorado County Environmental Management at (530) 621-5300.

EDH CSD APPROVES TWO BIKE PARKS ONE ALONG BASS LAKE RD

By John Davey

At the November 9th El Dorado Hills Community Services District Board of Directors meeting, directors approved two new bicycle parks that have followed a long analysis and design period.

Originally a bicycle park was considered for the utility corridor easement generally across from Stephen Harris Park, on the west side of El Dorado Hills Blvd. The El Dorado Hills Community Services District (EDH CSD) had long explored how to best utilize the restrictive nature of the utility easements, which wouldn't allow for building permanent structures, or significantly changing the grade of the project site.

As obstacles were still being worked on with PG&E and SMUD, EDH CSD began looking at park property owned along Bass Lake Road, south of the EDH Fire Department Station 86 location next to the Silver Dove intersection.

With initial designs being completed for both locations, and an updated positive response from PG&E and SMUD, Staff presented both bike park options to the EDH CSD Directors.

From the EDH CSD Staff Report - *On February 10, 2022, the Board approved the Capital Improvement Project (CIP) 954 for the Bike Park. The District owns several parcels of land*

zoned both Open Space (OS) and Recreational Facility Low (RF-L) in the utility corridor west of El Dorado Hills Blvd which has been the subject of a potential bike park. The land is encumbered by utility easements of both PG&E and SMUD. The restrictions that come with this keep the District from building structures and making any substantial changes to the existing grade of the land. The District also owns a 9.79-acre parcel at Silver Dove Way and Bass Lake Road, across from the El Dorado Hills Fire Station 86, that is zoned Residential Estate 10-acres (RE-10) which allows for a public day-use park by right of this designation. In March 2023, the District hired a consultant, Hilride, to produce a concept for both parcels. These concepts were presented to both the Parks and Planning Committee in June 2023 and the full Board of Directors in August 2023. During the regular meeting on August 10, 2023, the Board directed staff to conduct stakeholder workshops for each location presented and bring the information back through the Parks and Planning Committee. There were two separate workshops held, September 19 and 26, with each workshop devoted to reviewing a separate site.

Each workshop provided a space for good discussion and sharing of ideas. Staff and our consultant took note of the attendees' suggestion for design tweaks for each site. The updated concepts in the presentation reflect the feedback

received. The main theme and takeaway from the workshops, which were echoed by everyone present, was that a destination Bike Park is really what is needed in El Dorado Hills. The attendees wanted to make sure that the Bike Trails at the utility corridor site was not all the District was planning to do. The Parks and Planning Committee reviewed the adjusted designs at their October 17, 2023, meeting and heard from members of the public regarding the designs and their experience at the workshops. The Committee unanimously moved the item forward to the full Board of Directors for review. Additionally, District staff applied for an RTP grant for the utility corridor Bike Trails site. If awarded, the grant could provide over \$400k in funding. The award period for the RTP grant is this winter. It should be noted that any improvements at the utility corridor site will need to be approved by both SMUD and PG&E, which we have received positive feedback from so far. If the District chooses to develop either concept, Silver Dove Way property or the utility corridor, staff will work through the required process for both sites with the El Dorado County Planning Department.

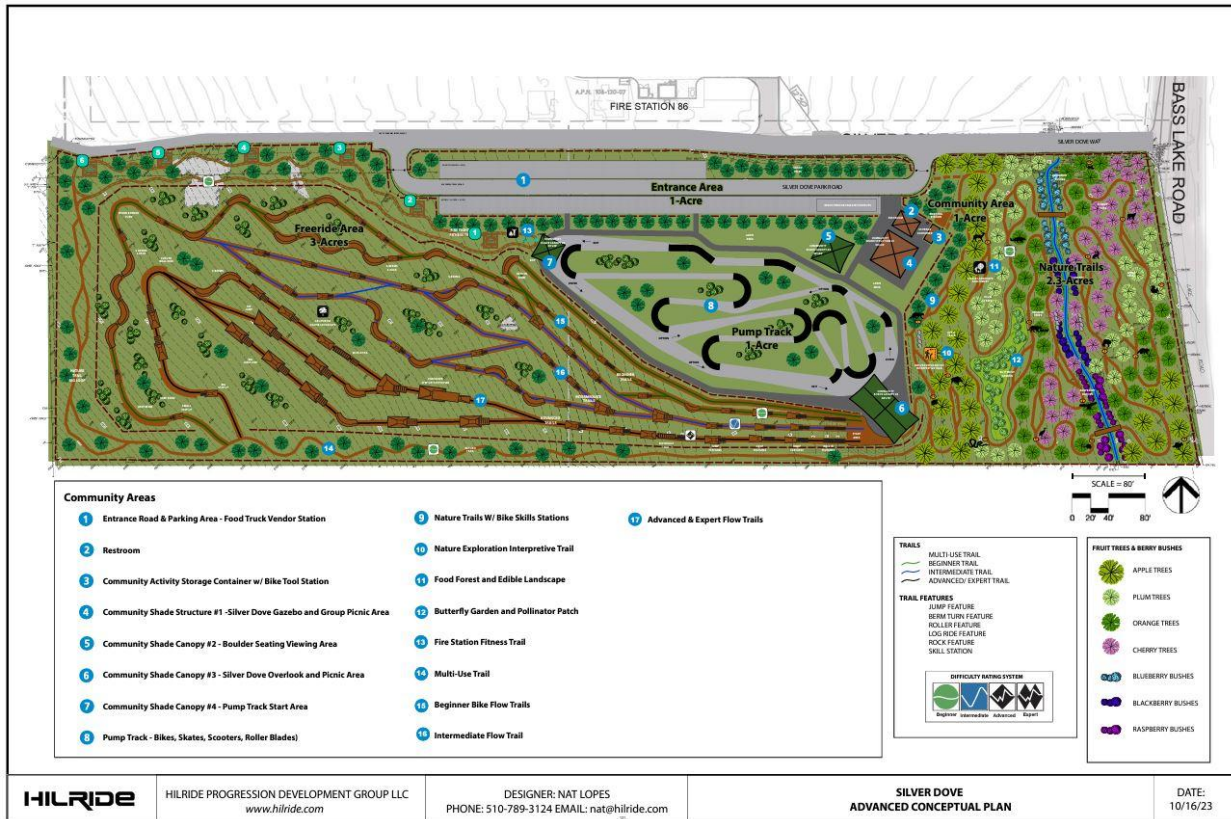
Fiscal Impact: *The estimated cost of construction based on the first concept design completed by a different consultant in 2022 was \$1.5M - which helped establish our initial budget. With FY24 budget cycle additions, the*

(Continued on page 10)

EDH CSD APPROVES TWO BIKE PARKS
(con't)

Most of the budget ask of \$2.525M would not be needed until FY25 and FY26 and possibly beyond.

Restrooms
Community Activity Storage Container/Bike Tool Station



construction budget total is currently \$1,725,000. This project would be fully funded by Park Impact Fees (PIF). With the development of each of the concept designs presented, cost estimates fluctuate and grow.

Therefore, based on the most recent cost estimates, both projects' construction budget together approaches \$4.1M. Also, additional funding is required to obtain appropriate environmental analysis and land use approval in the amount of \$250,000. This results in a professional services budget need of \$100,000. The total additional budget required for both projects is \$2,525,000.

A large contingent of the EDH bicycling community, as well as cycling enthusiasts from nearby communities were on hand at the meeting to encourage support of the agenda item.

The proposed use of the utility corridor is an innovative way to adopt difficult to use land into features that can benefit the community.

The EDH CSD Directors voted to approve both Bicycle Park Projects.

The Silver Dove Bicycle Park along Bass Lake Road will feature more room for visitors. Also included are:

Parking Area and Food Truck Vendor Station

4 shade structures with group picnic areas, boulder seating/viewing area, an overlook area, pump track start area

Pump Track

Nature trails with bike skills stations
Nation exploration interpretive trail
Food Forest and Edible landscape (apple, plum, orange, cherry, fruit trees, with blueberry, blackberry, and raspberry bushes)

Butterfly Garden and Pollinator Patch

Fire Station Fitness Trail

Multi-Use Trail

Beginner Bike Flow Trails

Intermediate Flow Trail

(Continued on page 11)

EDH CSD APPROVES TWO BIKE PARKS

(con't)

Trails include:

- Jump feature
- Berm Turn feature
- Roller feature
- Log Ride feature
- Rock feature
- Skills Station



Silver Dove Bike Park Site

For the Bass Lake Community, one of the potential issues to consider will be traffic and circulation impacts - Bass Lake Road at Silver Dove still remains a 2 lane road, very close to the Hollow Oak Dr intersection. While not on the current 20 year County Capital Improvement Program, Bass Lake Road between the Highway 50 interchange and Serrano Parkway is still suggested to become a four lane alignment... someday. The current designs for the Silver Dove Bike Park place it very close to the existing Bass Lake Road alignment, and it could conceivably be impacted by future road expansion. El Dorado Hills Fire Department has also suggested a desire for an improved alignment at the Station 86 Fire Station on Bass Lake Rd at Hollow Oak, as the current conditions have the Station 86

driveway, a private driveway immediately to the north, and the Hollow Oak intersection all in a very incongruent and haphazard alignment entering Bass Lake Road. EDH Fire also indicated a willingness to consider using the empty field in front of Station 86 as overflow parking for larger bicycle events.

EL DORADO COUNTY APPOINTS NEW PUBLIC HEALTH OFFICER

Press Release:

The El Dorado County Board of Supervisors Tuesday unanimously appointed Dr. Matthew Minson, M.D. as the County's Public Health Officer and local Registrar for Vital Statistics.

"We are delighted to have someone of Dr. Minson's caliber, experience working with rural counties and enthusiasm join our County as Public Health Officer," said Board chair Wendy Thomas. "We have a lot to gain from your deep knowledge and experience across all levels of government."

It is a legal requirement to appoint a full-time health officer, in accordance with the California Health and Safety Code.

"I'm honored and tremendously humbled by this opportunity," Minson told the Board. "This is important and noble work. My fervent hope is that six weeks from this appointment you are happy I am here and six months later you are proud."

Minson is a physician, inventor, author, and a decorated and awarded local, state, and federal health official. While at the United States Department of Health and Human Services Dr. Minson led the creation and delivery of the first National Health Security Strategy, the Telehealth Report to Congress, Emergency Use Authorization policies, and was the USDHHS White House Interagency Policy Liaison for Chemical and Biodefense, and countermeasures innovation.

An acknowledged expert in humanitarian response and public health medicine, Minson has more than 20 high-profile field deployments including 9/11 and was Deputy Coordinator for the US Health and Medical Response to the 2010 Haiti Earthquake at USAID. He has also been a medical director/team manager with FEMA's Urban Search and Rescue, the USAR Incident Support Team and was a Federal Medical Specialist Instructor.

He has been honored with appointments to the National Academies of Science, Engineering, and Medicine's Public Preparedness forum and as a principal member of the National Fire Protection Association's committees addressing First Responder Standards in Hazardous Material and WMD environments for the last 20 years. He also serves on the board of directors of HealthcareReady, addressing supply chain and bridging between government and the private sector.

(Continued on page 12)

COUNTY APPOINTS NEW PUBLIC HEALTH OFFICER (con't)

He holds five patents and academic appointments at the Texas Engineering Extension Service and the Center for Population Health and Aging at Texas A&M.

He is a graduate of the University of Texas Medical Branch where he also completed his internship and residency before completing an advanced track at the University of Texas Medical School in Houston.

Having visited El Dorado County while honeymooning with his wife Kelli, they fell in love with it and made a promise that if circumstances allowed, they would come back here to live.

"I really look forward to being a part of the community and doing great work,"

Minson will begin his tenure Monday, November 20th. His salary is \$251,721.60.

NOVEMBER LOCAL MEETING RECORDINGS

By John Davey

Recordings of local meetings in El Dorado Hills and El Dorado County in October 2023.

El Dorado Hills Community Council Meetings: First Monday of each month.

November Meeting
<https://www.youtube.com/watch?v=VmcAVCcppkEE>

El Dorado Hills Area Planning Advisory Committee Meetings: Typically the second Wednesday of each Month

November Meeting
CANCELED

El Dorado Hills Community Services District Board of Directors Meetings: Second Thursday of each month

November Meeting
<https://basslakeaction.net/edhcsd-nov-2023>

El Dorado Irrigation District Board EID Meetings, Agendas, Minutes -
<https://www.eid.org/about-us/board-of-directors/meetings-agendas-and-minutes>

EID Recorded Meetings on EID YouTube Channel -
<https://www.youtube.com/@eldoradoirrigationdistrict3994>



OR VISIT:
<https://basslakeaction.net/SUBSCRIBE>

BLAC ANNUAL MEETING & HOLIDAY PARTY



The Annual Bass Lake Action Committee Meeting & Holiday Party is scheduled for Saturday December 9th at 6PM at the home of John and Meirve Davey. Members and invited guests can RSVP to basslakemembers@gmail.com

For more information about meetings and membership, please contact Vice-President John Davey at 530-676-2657, or email basslakemembers@gmail.com.

Bass Lake Area Residents can also visit our online membership form at <https://basslakeaction.net/members>

