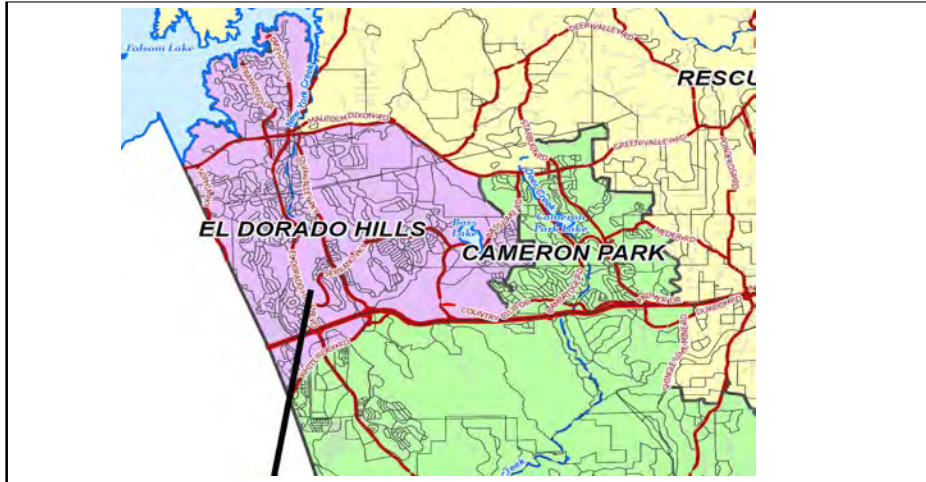




# BASS LAKE BULLETIN

Vol. XIX No.11 The Voice of the Bass Lake Community November 2021  
www.basslakeaction.org

## BOARD OF SUPERVISORS NARROWS REDISTRICTING DRAFT MAPS TO EDH COMMUNITY DRAFT OPTION



*El Dorado Hills Community Revised Map B Draft*

*By John Davey*

At the fifth redistricting meeting before the El Dorado County Board of Supervisors on November 16th, The Board provided direction to staff to move forward with the El Dorado Hills Community Draft Redistricting Alternative – Revised B Map as their preferred option, with some minor suggested changes from the Supervisors.

After the November 3rd redistricting hearing, Supervisors asked selected two draft maps be to further refined, and that Staff bring new versions of these maps back for consideration at the November 16th hearing. The two draft maps, the City Based Alternative - Revised #2, and the EDH Community Draft Alternative, were adjusted and resulted in four draft alternatives presented to the Board at the November 16th meeting:

- City Based Alternative -Revised #2 – A
- City Based Alternative -Revised #2 – B
- EDH Community Draft Alternative – Revised – A
- EDH Community Draft Alternative – Revised – B

Previous Draft Maps had moved the Bass Lake area into primarily rural districts, or, more unbelievably, made the fence line between Bridlewood Canyon and Woodridge the boundary line between districts, separating neighbors in the Bass Lake Villages into different districts.

Of the 39 comments submitted to the Board of Supervisors prior to the hearing, 16 were from Bass Lake area residents supporting EDH Community Draft Alternative B, which would keep the Bass Lake area together in a single suburban district. Another 6 comments came from other areas of the County -

*(continued on page 2)*

## "ROADKILL" ON DEADLY HIGHWAYS ESTIMATED TO COST CALIFORNIANS \$1BILLION THE LAST FIVE YEARS

*By Kathy Prevost*

A recently released November 10, 2021 report by the Road Ecology Center at the University of California, Davis, which used observations to report on traffic incidences and carcasses, the total cost of reported large wildlife vehicle collisions in California was estimated to be about \$1 billion and could be as high as \$2 billion when including crashes with mule deer that are claimed by insurance companies but not reported to the police.

Using information which only showed State highways, the actual instances of collisions that occur on other roads would most likely account for more incidents between wildlife and vehicles. This report was based on data in the annual report released by the California Highway Patrol of 44,000 traffic incidents from 2016 to 2020 and included overviews of collisions with large and small animals ranging from bighorn sheep, deer and bears to squirrels, birds and lizards.

It, also, included more than 65,000 observations reported to the web app California Roadkill Observation System or CROS between 2009 and 2020. The app is available for anyone in California to collect road kill data.

Not surprisingly, the "deadliest highway in California for wildlife vehicle collisions" was Interstate 280 on the San Francisco Peninsula which runs between San Bruno and Cupertino. These incidents cost the state more than \$178,000 per mile per year.

*(continued on page 2)*

**REDISTRICTING** (con't)

- who also supported the El Dorado Hills Community Draft Alternative B map.

The result is that the Bass Lake area remains a community of interest, contained entirely in one primarily suburban Supervisor District.

In short - Bass Lake Action Committee members, Bass Lake residents, El Dorado Hills and Cameron Park residents: YOUR VOICES made a difference.

The Supervisors ended up supporting the El Dorado Hills Community Revised B Map - which was derived from a conceptual map that Supervisors were ready to throw out at the last meeting on November 3rd, if not for the support of Supervisors Hidhal and Turnbo in keeping the EDH Community map in play - Supervisors have asked staff to see if some minor changes can be achieved:

- 1) Include the Business Park in El Dorado Hills in District 1;
- 2) Keep Rescue (North of Green Valley Road) together in District 4;
- 3) Keep the Northern portion of Pleasant Valley in District 2; and
- 4) If District 4 population needs to be adjusted, have District 3 go out to Cold Springs.

The final vote on the last adjustments to the draft map will be completed by mid-December. The Board seeks to adopt the final map in December, as by law, El Dorado County is required to submit the map and report to the State of California in January 2022.

The initial EDH Community Draft Alternative Map was the result of members of the El Dorado Hills Community seeking to support El Dorado Hills and Cameron Park being in two primarily suburban centered supervisor districts, as the largest (EDH) and third largest (Cameron Park) population centers in the county. El Dorado Hills, by population, is too large to be placed in just one district. The working group consisted of members from the following communities – Bass Lake, Serrano, Heritage, Highland Hills, The Serrano Owners Association, the Age Restricted Communities south of US 50, and the El Dorado Hills Chamber of Commerce.

The EDH Draft B map result is one district north of US 50 containing most of El Dorado Hills, and a second district containing all of Cameron Park and most of El Dorado Hills south of US 50. With the target population goal for all five districts being 38,327 (with a small allowance for deviation up to 10%), the El Dorado Hills Community Revised B Map indicates District 1 (EDH North of US50) will contain 38,333 residents, and District 2 will contain 39,485 residents, of which almost 28,000, a majority percentage, will be residents from Cameron Park and El Dorado Hills. ~

**"ROADKILL" ON DEADLY HIGHWAYS** (con't)

Other key hotspots for wildlife vehicle collisions in our area include I-80, US50 and SR 49 in the Sierra Nevada Foothills.

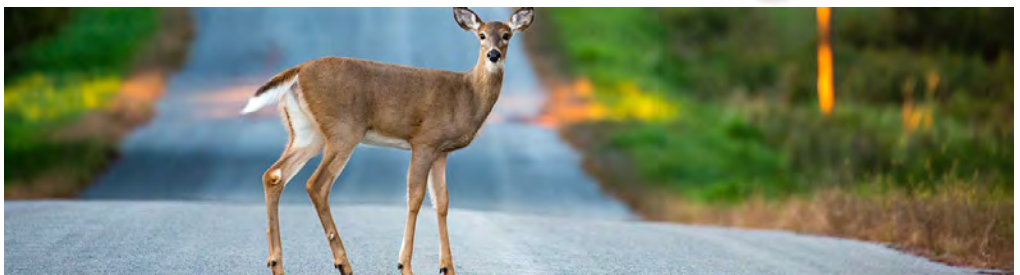
Mountain lions, bears and Pacific newts were reported as a significant issue in certain areas and the mountain lions and black bears are the most vulnerable as they usually cross highways because of their shrinking habitats. Drivers are not required to report their accidents or collisions, but of those that were reported, more than 300 mountain lions and 557 black bears were killed on California roads.

According to the report, this is just the tip of the iceberg of the ecological and economic impacts these wildlife vehicle collisions cost California and the legislature needs to support "workers in transportation to fence the conflict hotspot areas and build many more wildlife crossings".

A national nonprofit organization which is dedicated to protecting native animals and plants, the Defenders of Wildlife, reports that more than 200 people are killed in collisions with wildlife each year. Unfortunately, we are all too familiar with the prevalence of deer vehicle collisions in our area and we have encountered many more as wildlife has moved down the West Slope because of the recent Caldor Fire.

El Dorado County primarily has Columbia black-tail deer, one of the six subspecies of mule deer in California. In early fall as breeding season approaches, the deer can be more active and the bucks can be more aggressive.

Generally they forage around dusk and dawn, however, many of us have noticed them around in the daytime and in the evening locally. A friend related to me recently that she had seen a doe and a buck on Green Valley Road and Bass Lake Road in the middle of the day.



Depending on the time of year, as the weather changes, the deer population either moves to their summer or winter ranges which can pose a real threat to motorists.

Caltrans identifies known deer migration crossings on state highways with warning signs to reduce the incidence of deer-vehicle accidents. They mow the sides of the roadways and new construction and rehabilitation projects include the flattening of the slopes next to the roadways and the removal of bitter brush seed from the revegetation mix.

Fish and Game and Caltrans biologists are working to develop new technology that will improve both driver and deer safety by continuing to study the habits of the deer population.

6 Ways To Avoid Hitting A Deer

- 1. Watch for the rest of the gang. Deer are pack animals, and rarely travel alone.
- 2. Timing is everything. Deer are most active at dusk and dawn, periods when your vision is most compromised.
- 3. Use your headlights and look for the deer crossing road signs.
- 4. Stay center.
- 5. Brake, don't swerve.
- 6. Honk!

References: [November 10, 2021, Annual Roadkill Report Identifies Hot Spots and Paths Forward](#)

<https://dot.ca.gov/caltrans-near-me/district-9/district-9-popular-links/district-9-deer-migration-information>

<https://www.ucdavis.edu/climate/news/conflict-solutions-california-wildlife-and-drivers> ~



# EDH FIRE STATIONS 84 & 86 GET NEW FIRE ENGINES

## WELCOMED WITH TRADITIONAL PUSH-IN CEREMONIES

By John Davey

On November 15th, the El Dorado Hills Fire Department posted the following update on their social media accounts:

*“After almost 14 months, #EDHFire is pleased to announce that the new Engine 84 was placed into service after this morning’s “push-in” ceremony. The new engine is a 2020 Pierce Enforcer Wildland Urban Interface (WUI) build.*

*... Spoiler alert! The new Engine 86 will be placed into service on Wednesday.”*



Engine 84 Roll-In Ceremony November 15, 2021 at Station 84

And true enough, EDH Fire shared on their social media accounts on November 18th, that new ENGINE 86 was welcomed into Station 86 on Bass Lake Road with the traditional Roll-In ceremony - and then was put right to work.

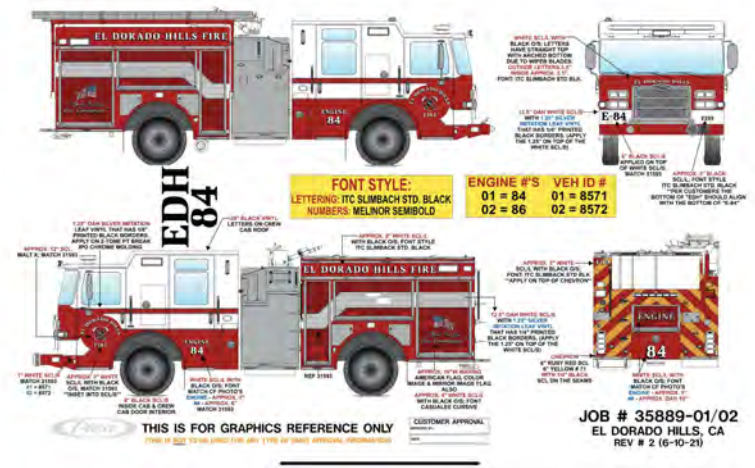


Engine 86 Roll-In Ceremony November 17, 2021 - Station 86 Bass Lake Road

*“EDHFire is pleased to announce that the new Engine 86 was placed into service after yesterday’s “push-in” ceremony. The new engine is a 2020 Pierce Enforcer Wildland Urban Interface (WUI) build. The engine is capable of pumping 1,500 gallons per minute and carries 500 gallons of water. This new engine also has the latest in safety technology, including passenger airbags, TAK-4 suspension, and collision avoidance technology. The new Fire Engine cost approximately \$755,000 and will be in service for more than a decade.*

*Minutes after being placed into service, Engine 86 was dispatched to its first call.*

*Make sure you wave to Engine 86 next time you see them in your neighborhood.”*



EDH Fire Engines 84 & 86 under construction at Pierce Mfg Factory in Appleton Wisconsin, July 4th 2021.

### EDH FIRE 2021 SANTA RUN - SAVE THE DATE!

The 58th Annual EDH Fire Department Santa Run is scheduled for multiple nights December 7th through December 12th. "It is that time of year again when El Dorado Hills Fire Department's "Holiday Hero's Toy Drive" we begin collecting and distributing toys to families in need. Each of our five EDH fire stations as well as Rescue Fire Station 83 will have collection boxes in front of our stations to allow for donations with social distancing. We also look forward to spreading some cheer this holiday season with our Santa stops."

Full details on the EDH Fire Santa Run page here <https://edhfire.com/news-events/2014-10-30-20-28-18/food-toy-drive>

### BASS LAKE AREA SANTA STOPS DECEMBER 9th

Night 3 (Thursday December 09, 2021)

Stop #	Est. Arrival	Name	Address
1	5:25	Serrano Visitors Center	4525 Serrano Parkway
2	6:00	Oak Knoll Park	3534 Alyssum Circle
3	6:35	Bridlewood Visitors Center	Devon Street and Collingswood Drive
4	7:10	Laurel Oaks Park	Whistlers Bend and Samuel Way



## From The BLAC Board

### President's Letter November 2021

As the sun sets earlier each day and I rush to finish my outdoor projects, I am reminded of my young teenage years living in Alameda where I could walk or bike anywhere on the island as long as I was home before dark. Sometimes that was very challenging as I might be at the other end of the island and it still continues to be. The early morning sunrises are much enjoyed and make up for it though!

There has been much happening in the state and in El Dorado County and the following are short articles on some of them as well as two Christmas Craft Show suggestions that are popular destinations every year.

If you have been enjoying the local Christmas Craft and Art shows this November, here are two more for you to visit in December.

Folsom Sutter Street Christmas Craft show, 915 Sutter Street,  
Sunday, December 5, 2021, from 9am - 4pm

St. John's 43rd Holiday of Hands, 5701 Locust Street, Carmichael  
Friday, December 3rd from 4-5pm - \$10,  
5-9pm - \$5  
Saturday, December 4th from 9am - 5pm - free

They are requiring proof of a Covid vaccination or a negative Covid test within 72 hours to gain admission.

### Pioneer Community Energy

The representatives of Pioneer Community Energy have held community meetings to educate the residents of the western slope of El Dorado County on the changes coming for our electricity provider for this coming year. Excluding Liberty Utilities customers, El Dorado County residents will automatically be enrolled in Pioneer Energy effective January 1, 2022.

We noticed that based on the questions that were asked during these meetings, we had learned more about how the company functions. For example, there were more questions at the November

## EDH CSD BOARD APPROVES \$173K CONTRACT TO STUDY EDUCATION AND OUTREACH FOR POSSIBLE FUTURE BOND BALLOT MEASURE

By John Davey

At the November 10, 2021 El Dorado Hills Community Services District Board of Directors meeting, Directors approved an agenda item regarding a contract for a second phase of public education and outreach for a future bond measure that would be used to fund new facilities, service programs, and also to acquire open space.

The contract would usher in phase two of the bond measure research effort process. The consultant, FSB Public Affairs will conduct additional research which will provide insight to the EDH CSD Board of Directors to determine if a potential bond ballot measure might succeed.

FSB Public Affairs collected data from various focus groups of up to a dozen members, in addition to 300 interviews via telephone with members of the El Dorado Hills community. During this effort, community members were asked to supply an opinion about the direction of the future in the area. FSB believes that the results are insightful – 57% of respondents believed that locally the community is heading in the right direction, while 32% believe the community was going in the wrong direction. A similar question about the direction of the state revealed the opposite result – 39% percent believed that the state was heading in the right direction, while 51% believe that the state was heading in the wrong direction.

FSB's poll also determined that 73% of respondents felt the EDH CSD services and programs were rated as 'excellent or good' – the exact breakout being 25% excellent, and 48% as good.

FSB's poll regarding a bond measure indicated 61% support, with 30% opposed, and 9% undecided.

FSB also asked what services or programs would make respondents more in favor of a bond measure – 77% indicated acquiring more open space would make them more supportive, with 70% citing trail connectivity, 63% indicated a multi-generational center would increase their

support, and 51% expressed support would increase for an aquatics center/facility.

Based on a previous study by EDH CSD staff in 2019, a parcel tax of \$12 per \$100,000 of assessed property value was suggested to respondents – as an example, a \$700,000 assessed property value would result in a bond levy of \$84 per year. At the suggested \$12 per \$100,000 rate, support dropped from the previous 61% to 53%.

A bond measure on the ballot would require approval from two-thirds of voters. ~

## LA NINA CONDITIONS PREDICTED TO PERSIST INTO 2022

By Kathy Prevost

The National Oceanic and Atmospheric Administration's Climate Prediction Center (NOAA CPC) announced on November 11th, that La Nina may persist into 2022 in its official winter outlook. A La Nina is a change in the global atmospheric circulation that affects weather around the United States and world.

Having emerged in October, La Nina conditions are predicted to have a 90% chance of persisting through the winter months and a 50% chance of continuing through spring. The signs are indicating the US will experience a "double dip La Nina.

"The forecaster consensus anticipates La Nina to persist longer, potentially returning to El Nino-Southern Oscillation - neutral (ENSO) during April-June 2022," NOAA stated in its Outlook. The current precipitation map issued November 18, 2021, reflects equal chances to leaning to below normal precipitation for northern California through December to February 2022.

California is split into two by a La Nina pattern although it is difficult to predict where the exact line will fall. It can bring more rain to Northern California and below-normal precipitation to Southern California. NOAA meteorologist believes this year will be a moderate strength La Nina.

References:

[https://www.cpc.ncep.noaa.gov/products/predictions/long\\_range/seasonal.php?lead=1](https://www.cpc.ncep.noaa.gov/products/predictions/long_range/seasonal.php?lead=1)

[https://www.cpc.ncep.noaa.gov/products/analysis\\_monitoring/enso\\_advisory/ensodisc.shtml](https://www.cpc.ncep.noaa.gov/products/analysis_monitoring/enso_advisory/ensodisc.shtml)

<https://ktla.com/news/local-news/la-nina-winter-what-noaa-says-socal-can-expect-for-temps-rain-drought/> ~

(continued on page 5)

## President's Letter - (con't)

- meeting about how solar customers would be handled. You can listen to the meetings that have been held on YouTube either from the Pioneer Energy website which is <https://pioneercommunityenergy.ca.gov> or through the links provided below.

According to their website, if you wish to remain with PG&E as your electric generation service, you may call Pioneer Community Energy at 844-937-7466 now or at any time in the future. Customers will need their PG&E account number to complete an opt-out request. Requests may be made online at <https://pioneercommunityenergy.ca.gov/opt-out>.

Customers may opt out by phone or website as early as 60 days prior to enrollment and return to PG&E in January, February or March. PG&E requires customers who return to stay with them for no less than a year.

## References:

El Dorado County Community Meeting - 11/2/2021 - hosted on YouTube

El Dorado Hills Community Council Meeting - 9/13/2021 - hosted on YouTube

Please see previous Bass Lake Bulletins for more information about Pioneer Community Energy:

<http://www.basslakeaction.org/images/bulletins/2021/08.pdf>

<http://www.basslakeaction.org/images/bulletins/2021/09.pdf>

**California Highway Patrol Impaired Driver Campaign**

Utilizing a grant from the California Office of Traffic Safety, the California Highway Patrol and the California Office of Traffic Safety have partnered for a campaign which is aimed at reducing the number of crashes caused by impaired drivers. Continuing until September 30, 2022, with the impaired driving reduction education and enforcement campaign grant, the CHP will be able to conduct additional saturation patrols, checkpoints and safety education efforts in California.

The CHP reported that there were 568 deaths and 11,444 injuries in 2019

within their jurisdiction in the state. There were more than 90,000 arrests made by CHP officers in 2020 for those driving under the influence of alcohol and or drugs. They will, also, participate in the public awareness campaign "Drive Sober or Get Pulled Over".

This program was funded by a grant provided by the California Office of Traffic Safety through the National Highway Traffic Safety Administration.

References: <https://www.mtdemocrat.com/news/funding-to-help-crack-down-on-impaired-driving/>

**California State Redistricting**

When the federal government publishes the updated census every ten years, the boundaries of all the electoral districts in each state must be redrawn so the population is evenly allocated among the new districts. While the county has been working diligently to establish the new supervisorial districts for El Dorado County, the California Citizens Redistricting Commission has been formulating state redistricting draft maps which they recently released for review. According to the Commission Chair Trena Turner, the maps are a "starting point for public discussion".

During this past summer, the commission received communities of interest testimony which they considered for district boundaries and the possible trade-offs that needed to be made in the draft maps. The final maps will be completed and certified by December 27th, and the commission strongly encourages California state residents to continue to comment as they have a "promise to create maps that encourage fair representation".

The public may submit their comments for at least 14 days from November 10th, when the first preliminary statewide draft maps of the Congressional, State Senatorial, Assembly and the State Board of Equalization districts was released. During this 14-day period, the commission will not display any other map for public comment.

The state constitution calls on the commission to follow certain criteria to draw District Maps which are in this order:

**ROAD WORK UPDATES**

By John Davey

The Bass Lake area continues to see ongoing road work projects as 2021 draws to a close.

Motorists may have noticed the installation of metering signals at area onramps for US50. The new metering signals for the Bass Lake Road US50 onramps are not yet activated, but should be in use soon.

Also at the Bass Lake Road US50 interchange, the eastbound Bass Lake Road on and off ramps are scheduled for closure to accommodate the construction schedule for traffic signals. El Dorado County Transportation Department advises that the project contractor has experienced some schedule delays, but the dates and times indicated on the electronic portable message boards at the project site provide the most up-to-date information. As of our publishing date, on and off ramp closures at eastbound Bass Lake Road-US50 are scheduled beginning November 21st through December 27th from 9:00PM to 5:00AM daily.

This project should hopefully resolve the traffic back up on eastbound US50 at the Bass Lake Road interchange.

Also ongoing is the partial closure of Sienna Ridge Road from Bass Lake Road north to Bronzewing Place. Originally scheduled for temporary closure for 90 days beginning on July 28, 2021, and ending October 25, 2021, the closure has been extended for a period of 60 additional calendar days, including weekends and holidays, or until the Director of Transportation determines that the improvements are complete, whichever is sooner.

**REMINDER**

We continue to hear from many residents about the right turn lanes on Bass Lake Rd at Madera Way and Silver Springs Pkwy.

**They are separate turn lanes** - do NOT enter the Madera Way right turn lane to continue onto the Bass Lake Rd right turn land at Silver Springs Pkwy.

We continue to notify the County Transportation Department, and they are monitoring the situation. ~

**SUBSCRIBE  
TO THE FREE MONTHLY  
BASS LAKE BULLETIN  
CLICK HERE**

OR VISIT: <http://basslakeaction.net/SUBSCRIBE>

(Continued on page 6)

## President's Letter - (con't)

1. Districts must be of equal population to comply with the U.S. Constitution.
2. Districts must comply with the Voting Rights Act to ensure that minorities have an equal opportunity to elect representatives of their choice.
3. Districts must be drawn contiguously, so that all parts of the district are connected to each other.
4. Districts must minimize the division of cities, counties, neighborhoods and communities of interest to the extent possible.
5. Districts should be geographically compact: such that nearby areas of population are not bypassed for a more distant population. This requirement refers to density, not shape. Census blocks cannot be split.
6. Where practicable each Senate district should be comprised of two complete and adjacent Assembly districts and Board of Equalization districts should be comprised of 10 complete and adjacent State Senate Districts.

As with the county, the location of residence of any incumbent or political candidate "may not be considered in the creation of the maps, and Districts may not be drawn for the purpose of favoring or discriminated against an incumbent, political candidate or political party".

These meetings will be followed by a series of meetings held in most of December and the meeting schedule and online feedback forms for residents to fill out can be found at <https://www.wedrawthelinesca.org/>. California residents have through tomorrow to weigh in on the new maps at a meeting from 9:30 a.m. to 2:30 p.m.

Facing a very compressed time schedule, (California has 52 congressional districts, 80 for the Assembly, 40 for the State Senate) the Redistricting Commission needs to ensure that every district has the same number of people which is about 761,000 in the State Senate

Senate districts and 494,000 in the Assembly Districts which can prove to be quite complex, particularly this year since California is losing a congressional seat for the very first time.

There will most likely be many significant changes between the preliminary map and the final map which is due to the Secretary of State's office according to a court order deadline of December 27th.

California voters passed the Voters First Act in 2008, which authorized the creation of an independent California Citizens Redistricting Commission to draw the state Senate, Assembly and Board of Equalization District lines. The voters First Act give the Commission the responsibility of drawing new Congressional Districts in 2010 for the following census.

El Dorado County wrote a letter to the Commission, which was approved unanimously by the BOS on October 26, requesting that the Sierra Nevada counties (including Amador, Placer and Nevada), who share similar concerns unique to that part of the state, should be kept united giving them a stronger voice at the federal level. A link to the letter is below under references.

## References:

<https://www.wedrawthelinesca.org/>

<https://www.mtdemocrat.com/news/county-to-send-letter-to-california-redistricting-commission/>

## How Did Turkeys Get Their Name

According to our November 2018 Bulletin written by our now retired editor, John Thomson, there are several theories as to how turkey's got their name. One of the theories states that Christopher Columbus thought he had landed in India and he believed that turkeys were peacocks so he called them "tuka" which is peacock in the Tamil Indian language.

Another belief is that the Native

American name for turkey is firkee which could have been adopted by the colonists. Or yet another says that when a turkey is alarmed it makes the "Turk Turk" noise and this was how the turkey got its name.

However they arrived at their name, this Thursday many kitchens will be filled with the warm aromas of turkey and dressing cooking in the oven with the Macy's Day parade on the television. We wish you all the very happiest of Thanksgivings.

Respectfully,  
Kathy Prevost  
President  
Bass Lake Action Committee

### BASS LAKE ACTION COMMITTEE ANNOUNCES DECEMBER 13, 2021 ANNUAL BOARD MEETING & ELECTION

The Bass Lake Action Committee Board of Directors conducted the last quarterly Board of Directors meeting of 2021 virtually on Monday November 8, 2021. At the meeting, the Board of Directors voted to cancel the 2021 Holiday party, due to the continuing concerns regarding the risk of a public gathering for our senior members as the COVID Delta Variant recedes. The Board also established an electronic voting solution for the election of the 2022 Board of Directors. Election notification will arrive in December via email to members.

**The December 14th Bass Lake Action Committee Annual Board meeting will be held virtually, online, beginning at 7PM, through 7:30PM.**

All Bass Lake Action Committee Members are invited to attend, and members will receive an email invitation that will include the Zoom Link and instructions for attending the meeting in early December.

The December 2021 Annual Meeting Agenda will be focused on the BLAC Board of Directors Candidate slate for 2022. Following the election results, Members are invited to socialize in the virtual meeting as the Committee closes out 2021.

For further information about BLAC meetings and membership, please contact Vice-President John Davey at 530-676-2657, or email [basslakemembers@gmail.com](mailto:basslakemembers@gmail.com). Residents can also visit our online membership form at <http://basslakeaction.net/members> ~

The Bass Lake Bulletin is published monthly by the Bass Lake Action Committee, 3907 Watsonia Glen Drive, El Dorado Hills, CA 95762. Copyright © 2021. All rights reserved. No part of this publication may be reproduced or transmitted in any form or by any means, electronic or mechanical, including photocopy, recording or any storage and retrieval system, without prior written permission from the Bass Lake Action Committee.

*Editor Emeritus John Thomson Ph.D.*

Editors: Bass Lake Action Committee Board Of Directors

President Kathy Prevost | Vice President John Davey | Treasurer Wil Brunet | Secretary Jan Buxton | Director At Large Ron Cassidy

[blacinfo@aol.com](mailto:blacinfo@aol.com) - 530-676-2657

For additional information contact: Vice President John Davey 916-752-8183