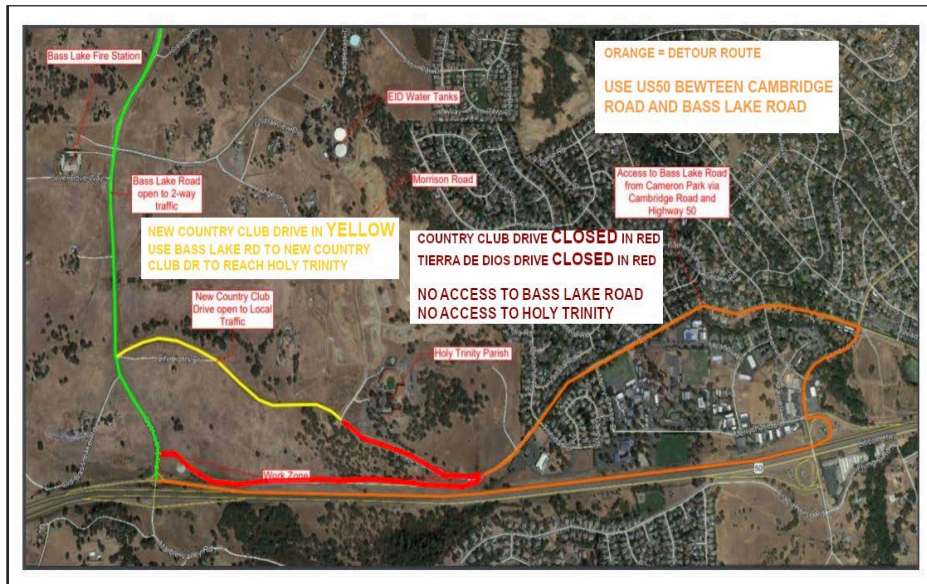




BASS LAKE BULLETIN

Vol. XVIII No. 9 The Voice of the Bass Lake Community September 2020
www.basslakeaction.org

COUNTRY CLUB DRIVE - BASS LAKE ROAD INTERSECTION REALIGNMENT: THE HOME STRETCH



Country Club Drive re-alignment PHASE 4 DETOUR
Full image available at <http://basslakeaction.net/BassLake-CountryClub-Phase4DETOUR.jpg>
modified image courtesy El Dorado County

By John Davey

Beginning on Friday September 11th, El Dorado County Department of Transportation implemented a PHASE 4 Detour in the ongoing construction of the Country Club Drive - Bass Lake Road Intersection realignment project, which will move the intersection 1700 feet north of the current location, and provide traffic signals, left turn lanes, and right turn pockets.

Moving the intersection north of US50 helps to correct the traffic impacts of the Country Club Drive - Bass Lake Road intersection being less than 300 feet north of the Bass Lake Road US50 interchange.

The project has been envisioned since the early 1990s, and is now being completed as conditioned requirements of the Bass Lake Hills Specific Plan Phase 1B and Phase 2 residential subdivision developments. Those current phase 1B

developments are Hawk View, and Bell Ranch in El Dorado Hills, and Bell Woods in Cameron Park.

The only approved Phase 2 project is the 90 home Bass Lake North development, along Sienna Ridge Road.

The original Phase 1A project, was Laurel Oaks, which moved Bass Lake Road to its current alignment north of Hollow Oak Road, and constructed the intersection of Bass Lake Road and Serrano Parkway. The remaining eastern Bass Lake Road alignment was improved at its northern terminus, and was renamed Sienna Ridge Road.

The Phase 4 Detour of Country Club Drive began the morning of September 11th, and it expected to be in place through September 28th. This is the fourth of five phases of detours. The fifth detour timing and route will be -

EL DORADO HILLS FROM 1826 TO 1862

By Kathy Prevost

Because San Francisco Bay was often covered by fog, it was not discovered until 1770 by Gaspar de Portola's expedition as they traveled north from Mexico and San Diego by land. While San Francisco had an allure, early travelers with a sense of adventure followed the rivers inland to explore the Sierra Mountains or look for gold.

Jedediah Smith, leading a fur trapping party from Santa Fe, was the first to make the journey overland through the mountains and deserts in 1826. By following the Humboldt and Truckee Rivers, he located the Sacramento River.

In 1839 as people began to settle in the valleys and foothills, John Sutter who had emigrated from Switzerland, established New Helvetia (New Switzerland) at the confluence of the American and Sacramento Rivers which flooded in 1849 and 1850 before they built levees because it was built on a floodplain.

By 1841, many of the overland emigrants were traveling on to Oregon. However, the Bartleson-Bidwell party found a pass through the Sierra and down to the Stanislaus River by following the Humboldt River which took them to the San Joaquin Valley.

Advised by Indians, the John C. Fremont and Kit Carson party followed the crest of ridges to avoid the deep snow in the ravines to cross the - (continued on page 2)

(continued on page 2)

COUNTRY CLUB DRIVE PHASE 4 DETOUR (con't)

- announced before being implemented.

The press release from El Dorado County provided the following information:

Vehicles will be directed around the intersection utilizing Bass Lake Road, New Country Club Drive, Cambridge Road, and Highway 50 from Friday, September 11th through Monday, September, 28th.

Portable changeable message signs are posted and will remain throughout the duration of the project.

The Tierra De Dios Drive detour will allow reconstruction of the intersection at Tierra De Dios Drive and Country Club Drive, and reconstruction of the new realigned Bass Lake Road and Existing Country Club Drive intersection. Please check the County website for any further traffic control.

The Phase 4 Detour has the following impacts:

- (Old) Country Club Drive from Tierra De Dios Drive to Bass Lake Road is CLOSED.
- Tierra De Dios Drive from Country Club Drive to Holy Trinity Catholic Church is CLOSED.
- To access Country Club Drive and the BAR J neighborhoods, Bass Lake Motorists and HWY50 Motorists will have to USE HWY50 EAST and exit at Cambridge Road.

Motorists in Cameron Park neighborhoods located along Country Club Drive, WILL NOT be able to access either Bass Lake Road, or Tierra De Dios Road from Country Club Drive – this includes neighborhoods from:

- El Norte Rd
- Trinidad Dr
- Merrychase Dr
- Castana Dr
- Placitas Dr
- Knollwood Dr

To access HOLY TRINITY CHURCH, motorists will have to travel on Bass Lake Road, to the NEW COUNTRY CLUB DRIVE intersection, and then travel on NEW COUNTRY CLUB DRIVE to Holy Trinity Church.

EDH FROM 1826 to 1862 (con't)

- Sierra up the Carson River and into El Dorado County to follow the South Fork of the American River to Sutter's Fort in March of 1844.

Mormon settlers led by Brigham Young headed for California to escape the Midwest and crossed the Missouri River at Omaha in 1846. Some of them volunteered for the Mexican war and after training at Fort Leavenworth, they were assigned to the San Diego Mission battalion in January of 1847.

When they mustered out in July, some went to Fort Sutter and others traveled to Salt Lake City where they ultimately met up with Brigham Young who reached there in July of 1847 with the remaining emigrants.

The American Military in Los Angeles named James Marshall Chief Carpenter in August of 1846 and in May of 1847 he traveled to Sutter's Fort to find a saw mill site for John Sutter. A site was chosen at Coloma on the South Fork of the American River in El Dorado County and work was begun with the assistance of the Mormons at Fort Sutter.

There are two kinds of formats for gold, one is loose or hard rock deposits which are mostly found in quartz veins and the second is Placer gold which has pulled loose from the quartz veins. Placer gold is usually deposited in nearby streams and is the easiest to remove.

The western slope of the Sierra contains auriferous channels layered on top of one another and flowing in different directions. The streams of today, such as Hangtown and Weber Creek, intersected with the older channels underneath them picking up gold and carrying it down their own channels leaving it in various popular panning locations during the Gold Rush days.

With the discovery of gold by Marshall in the sawmill tailrace on January 24, 1848, the word spread throughout the west and more slowly to the east. By the end of 1849, 39,000 prospective settlers had arrived by sea and 49,000 overland with even a river steamship arriving in Sacramento in August of 1849.

Threatened by Marshall that he would shoot anybody on his and Sutter's claim many of the men who were building Sutter Mill moved downstream to what is today known as Mormon Island and discovered placers even richer than those at Coloma.

The Mormon Tavern was built around that

time by a Mr. Morgan which offered hospitality to the miners and it later served as a remount station for the Pony

Express riders from April 1860 through October 1861. The tavern was quite busy with a dining room around 100 feet in length and was often filled three times at each meal by hungry teamsters.

Charles Weber, who owned a Rancho at French Camp on the San Joaquin River near the present day Stockton, discovered gold on the Mokelumne River and then proceeded to what is now known as Weber Creek in 1848. Employing about a thousand local Indians, they removed so much gold they sent it out daily by horseback.

Just a few miles away, vaqueros while herding cattle discovered the rich dry diggings of present day Placerville. By October of 1849, over 10,000 men were camped in the area and others from far away had already left with enough gold for a lifetime.

Weber was one of the few early miners to depart from the gold fields with a fortune still intact and when the company dissolved in September of 1848, he returned to his Rancho and directed efforts to build the city of Stockton.

Others whose names we would recognize who did well during the gold rush included the "Big Four" Hopkins, Huntington, Stanford and Crocker who were ultimately very successful in the railroad business. They built the Central Pacific Railroad (CPRR) which formed the western portion through the Sierra Nevada and the Rocky Mountains of the First Continental Railroad in the United States.

All of the creeks in what is now known as El Dorado Hills were mined, particularly the Allegheny, New York, and Carson Creeks. Mining continued into the 20th century including gold and chromite mining along Carson Creek by dredging.

There were also active very successful quartz mines in the area.

Coloma was voted the county seat when California became the 31st state in 1850, and four years later it was moved to Placerville.

(Continued on page 5)

EL DORADO COUNTY ELECTIONS DEPARTMENT ANNOUNCES NOVEMBER ELECTION DETAILS

By John Davey

The El Dorado County Elections Department has provided the following details for the November 3, 2020 Presidential Election.

Beginning September 21st, Voter Information Packets will be mailed to registered voters. Original scheduled for October 5th, **Ballots will now begin to be mailed to registered voters on September 28th.**

If you need to register to vote, or if you need to check your registration status, you can do so online at <https://registertovote.ca.gov/RegisterToVote>.

The Elections Department has also issued a Supplement to the Election Administration Plan:

From the supplement: **CHANGES TO VOTE CENTER OPERATIONS AND PROTOCOL**

Days of Operation-
El Dorado County will be reducing the number of days Vote Centers are open for in person voting from 11 days to 4 days. All 13 vote centers will be open beginning Saturday October 31, 2020 through Election Day. See the vote center listing included as exhibit A for locations and hours of operation. Health and Safety-

El Dorado County will be implementing specific measures during in person voting at vote centers designed to keep vote center workers and voters safe in accordance with State and County public health standards. Those measures include:

- All vote center workers will be required to wear protective face coverings and voters will be strongly encouraged to wear them.
- Social Distancing protocols will be implemented inside and outside vote centers.
- Vote center workers will be socially distanced at all time and protective barriers will be in place between vote center workers and voters.
- Voting stations will be spaced six feet apart.
- A vote center worker will be dedicated to sanitizing frequently touched surfaces and equipment throughout the day.
- Voters that cannot or will not wear protective face coverings will have a separate flow in the vote center keeping them distanced from voters that do wear them and have a curbside voting option.
- Vote centers will be limited to only voters that desire to vote in person or require language or disability assistance from vote center workers.-

Continued on page 4

SILVER SPRINGS PARKWAY CONSTRUCTION BEGINS

By John Davey

INITIAL ACTIVITIES INCLUDE ONE WAY TRAFFIC CONTROLS

Construction of the long planned Southern connection of Silver Springs Parkway to Bass Lake Road at the 25 MPH curve between Madera Way and Magnolia Hills Drive began on Thursday September 3rd.

The northern segment of Silver Springs Parkway was constructed in 2014. It comes in at just 500 feet short of a mile. The project has been known as the “new Bass Lake Road” as far back as the late 1980s and into the mid 1990s.

It is a road segment that connects Bass Lake Road, north to Green Valley Road, just to the east of Pleasant Grove Middle School in Rescue.

Silver Springs Parkway will serve the 234 home Silver Springs residential development, with it’s initial subdivision, REVERE, under construction now.

The 2014 Silver Springs Parkway Project constructed the northern segment of Silver Springs Parkway, including a traffic signal at the Silver Springs Parkway – Green Valley Road intersection, and also improved the (western) Deer Valley Road – Green Valley Road intersection with turn pockets and left turn lanes.

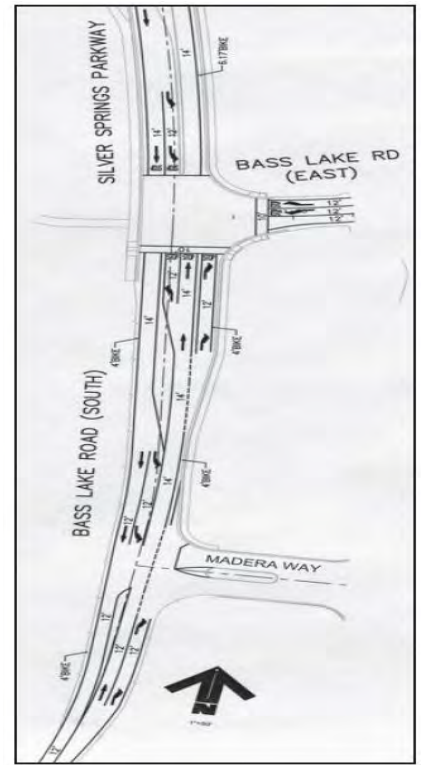
EL DORADO COUNTY DEPARTMENT OF TRANSPORTATION DETAILS

The El Dorado County Department of Transportation provided the following details about the construction timelines, and possible impacts for motorists on Bass Lake Road.

There will be reversing controls (alternating one-way traffic) on Bass Lake Road on Thursday, September 3. Granite Construction will be performing small excavations to positively determine the locations of some EID underground facilities prior to the start of construction.

Construction will start in full on Tuesday, September 8. At this point, Granite Construction does not see a need to implement reversing controls on Bass Lake Road on a regular basis during the rest of the 2020 construction season. Most of the 2020 work will take place off road, north of the 25 mph curve in the woods between the curve and current southerly terminus of Silver Springs.

There will be reversing controls on Bass Lake from time to time, but it won’t be for weeks on



Design of new Silver Springs Parkway-Bass Lake Road Intersection

end or anything like that.

In spring 2021, we will be closing Bass Lake between Magnolia Hills and Madera for a couple of months to reconstruct Bass Lake Road just east of the Bass Lake/Silver Springs intersection.

The County’s posted detour will send traffic to Green Valley and Silver Springs (which will then be open from Green Valley Road to Bass Lake Road). This presumes, of course, that Granite Construction is successful in completing the work they have planned for 2020 without utility relocation delays or non-climatic weather delays.

SAFETY AND CIRCULATION IMPROVEMENTS WILL FINALLY ARRIVE FOR AREA RESIDENTS

When completed, the planned Silver Springs Parkway – Bass Lake Road intersection will be a three-way stop, controlled with stop signs. Motorists traveling north on Bass Lake Road that wish to continue on Bass Lake Road towards Magnolia Hills Drive, Woodleigh Lane, Gateway Drive, Parkdale Lane, Green Valley Elementary School, and Foxmore Lane, will need to complete a right turn movement in the newly constructed right turn lane at the new intersection.

Likewise, motorists traveling south on Bass Lake road approaching the new intersection, will need to complete either a left turn to continue south on Bass Lake Road, or a right turn to proceed north on Silver Springs Parkway.

(Continued on page 4)



From The BLAC Board President's Letter September 2020

Happy September! My Chinese Pistache tree thinks it is fall and the leaves are already turning red and orange. Clearly it is not because of cooler weather but definitely because of our shorter days!

A year ago, our Bass Lake Bulletin published the first of a series of articles about Bass Lake Road, past, present and future and an article about the road work improvements beginning on the realignment of Country Club Drive.

Today we have a brand new shopping center at Sienna Ridge which has been very well received, the County has completed many of the planned changes to the southern end of Bass Lake Road, Tierra de Dios and the closure of old Country Club to Bass Lake Road which will soon become a bike path.

And it appears that Silver Springs Parkway will actually be in the offing next year!

Unfortunately, at least at this point, none of the items the Traffic Safety Committee had detailed in our petition last September regarding traffic and pedestrian safety concerns for Bass Lake Road will come to fruition.

The El Dorado Hills Community Services District did have a traffic study performed as part of their proposed Bass Lake Park plans which hopefully they will be releasing soon.

I have heard that a new Starbucks is in the "brew" at the Sienna Ridge Shopping Center inside the new Safeway store possibly by late fall! It will be a very welcome and popular addition to the new shopping center.

As you all have noticed I'm sure, home sales have been very brisk in our area with homes selling in a matter of days after they're offered on the market. While we do not have the August -

(continued on page 5)

SILVER SPRINGS PARKWAY CONSTRUCTION

(con't)

Included in designs presented at a Bass Lake Action Committee Meeting in September 2017 are a right turn pocket on northbound Bass Lake Road onto Madera Way.

The Design images also suggest a four-foot bicycle lane from Madera Way north to Silver Springs Parkway.



Close up of the redesigned Madera Way-Bass Lake Road Intersection

Included in these drawings are what appear to be partial sidewalks at the new intersection.

The Northern Section of Silver Springs Parkway has bicycle lanes and sidewalks on both the west and east sides of the roadway. The Southern extension is expected to continue the bicycle and sidewalk facilities up to the Bass Lake Road intersection.



Close up view new Silver Springs Parkway-Bass Lake Road Intersection

NOVEMBER ELECTION DETAILS

(con't)

- - Vote by Mail drop off will be outside the vote center.
- Drive up/curbside voting will be available at all vote centers for voters with disabilities and those that do not wear protective face coverings.
- Limit the number of voters allowed inside the vote center at a given time based on size of the center and ability to maintain social distance.
- All vote centers will have the following personal protective items available to voters that need them:
 - Face Masks
 - Disposable Gloves
 - Hand Sanitizer
 - Face Shields

How voters can ensure they vote and return their ballot safely

Since the implementation of the Voters Choice Act for the March 2020 Presidential Primary, all registered voters receive a ballot in the mail. For the November Presidential General Election, the mailed ballots will enter the mail stream on **September 28, 2020** and should arrive in home mailboxes by October 12.

There are several alternatives for voters to mark and return their ballot safely. To minimize potential exposure to Covid-19 voters can mark the ballot they receive in the mail in the privacy of their own home any time before or on Election Day. When complete they can return their ballot in the postage-paid envelope provided with the ballot using any of the following methods that avoids contact with others.

US Postal Service- Insert the marked ballot in the postage paid return envelope, **SIGN** the envelope and deposit it in any US Postal Service mailbox. The ballot will be delivered directly to the El Dorado County Elections Department.

Drop Boxes- Insert the marked ballot in the return envelope, **SIGN** the envelope and deposit it in any of the 13 ballot drop boxes located throughout the county. Six of those boxes have permanent drive up access and all envelopes deposited in drop boxes are retrieved by an El Dorado County Election Officials regularly. A list of locations and available hours of the drop boxes is included as Appendix B.

(continued on page 6)

President's Letter - (con't)

- numbers at this point in time, for the month of July the National Association of Realtors reported that total existing completed home sales increased 24.7% from June.

This compared to the previous monthly record sales of 20.7% in June and an increase of 8.7% from July 2019. According to Redfin, following Phoenix, Sacramento was the number two destination in the country for home searchers considering relocation to a new city in July.

Their analysis was based on over a million site users from April to May searching for homes in 80 Metro areas. The people looking to move into the Sacramento area accounted for about 9000 redfin.com users and 46% of the users were from outside the Sacramento area with the Bay Area being the most popular origin of the searches.

With low interest rates and more companies announcing that their employees may work remotely from home indefinitely, it certainly allows more flexibility for prospective homeowners.

Apparently, the places that searchers wish to leave remains the same as before the pandemic hit the United States which are New York, San Francisco and Los Angeles, which had the largest outflow of users in April and May.

Prior to the pandemic, Census Data showed 36,000 residents commuted to the Bay Area for work from the greater Sacramento area. However, now Bay Area Tech workers are being encouraged to move here and work from home by local recruiters.

According to Realtor.com for August, El Dorado Hills continues to be a seller's market with more buyers on the market than there are homes available and they are selling faster than other areas in El Dorado County.

Vickie Sanders, who serves as Park Manager for El Dorado County, recently presented a list of 8 projects to the County Supervisors that would add to existing recreational and sports venues for the county, which were reviewed and approved. -

(Continued on page 6)

EDH FROM 1826 to 1862

(con't)

The old well traveled Emigrant Trail which entered the California Territory from Utah Territory at Genoa in Carson Valley, Nevada, went south of Silver Lake to Sly Park, east of Placerville and to Diamond Springs, Shingle Springs, Clarksville and White Rock into the Sacramento County. It had various names including the Carson-Emigrant Trail, the Overland Trail, the Sacramento-Washoe Road and White Rock Road.

Also, well used was the old Coloma Road (a large part of which is our current Green Valley Road) built by John Sutter and James Marshall in 1847 to bring supplies to their sawmill near Coloma by employing Indians. Later the road was used for stagecoach, freight travel and was a major mail route as well as one of the Pony Express routes.

It was routed from Sacramento to Folsom, Mormon Island, Green Valley, Uniontown and Coloma with a ferry at the South Fork of the American River. A bridge was finally built and by 1852, 22 road districts were established with supervisors appointed to care for each specific road.

In 1848, a road was built by John C. Johnson from Dry Diggings over Echo Summit to Lake Valley at South Lake Tahoe which happened to be the most direct route over the Sierra. In 1857, stagecoaches crossed over this route and it was improved in 1858 when Hawley Grade was built by the county to Luther Pass Road. It was also used by the Pony Express 1860-1861.

Winter snow would close the road and in 1862 private operators completed the road as a Toll way which was ultimately purchased in 1895 by the State Bureau of Highways making Highway 50 the first state highway which was paved in 1923.

In Gold Rush times with traffic as heavy as our rush hour traffic is currently, there would be a continuous line of vehicles, pack trains and travelers on foot winding up the hill and if a teamster had to move off the road for some reason it might be a whole day before he could reenter to the line..

Lasting only about 10 or 12 years, the California Gold Rush, introduced a huge amount of people to the region, some who passed through and others who remained looking for a place to settle with more opportunities and better wages.

Many brought their families and by 1852 with the changing demographics, there were 12,000 Californians farming where miners had passed away from scurvy a few years earlier.

California emigration peaked that year with over 67,000 people arriving by sea primarily through Panama, 40,000 traveling by land and about 20,000 Chinese immigrants.

Tents and shacks were replaced by buildings in Placerville and other towns in the western foothills. Other gold strikes in Northern California and faraway Australia lured many of the remaining miners away from the Sierra Foothills.

When California became a state, El Dorado County was one of the 27 counties identified and all land was owned by the United States government. However, settlers could claim up to 160 acres by occupying and making improvements on the land. There were many land disputes because of confusion between the federal, state and county property regulations.

The area south of El Dorado Hills was known as Clarkston's town in the early Gold Rush days as a person by that name had a stopping place along the road. It was near the junction of the freight road to the mines and a stagecoach road from Sacramento by way of Prairie City.

A post office was established in 1855 and the postal authorities renamed the town Clarksville for Luther Brown Clark and his brother Harry. Gilbert and William Tong served as Postmasters of Clarksville and Gilbert was also a Justice of the Peace.

One of its earliest families, Hezekiah and Margaret Tong, built a gated Toll Road and an Inn called the Railroad House while both mining and raising cattle.

To be continued in October!

References: The El Dorado Handbook 2003 by Richard Johnson and Anna van Raaphorst-Johnson



image credit: Library of Congress

President's Letter - (con't)

- She also discussed the need to update the Parks and Trails Master Plan, and for more staff to ensure the plans are implemented.

Two of the projects presented were a Sports Complex possibility for Diamond Springs and a dog park in Placerville. The Sports Complex is considered to be a top priority as local school fields are only available on a limited basis.

Marshall Foundation owns a 30-acre site in the Missouri Flat/Diamond Springs area and intends it to be used as a sport complex. While there is no agreement with the foundation, she believed it would be an opportunity to develop an active Recreation Center.

It would be operated as a public-private project and the Boys & Girls Club of El Dorado County Western Slope would operate it.

The dog park could be built on vacant county-owned land adjoining the El Dorado Trail off Jacquier Road. While no funding or plans have been approved or identified, the park staff proposed that the County and City work together to fund the development of the dog park.

Other projects on the list included the Old Depot Road Bike Park, a park at Chili Bar, Monroe Ridge Trail, Forebay Community Park, El Dorado County Historical Railroad Park and a 56 acre parcel along Lake Tahoe Shore.

The autumnal equinox is not far off and Fall will arrive on Tuesday, September 22, this year.

Respectfully,

Kathy Prevost
President
Bass Lake Action Committee

FALL WEATHER

It is the summer's great last beat, It is the fall's first chill: They meet.

-Sarah Morgan Bryan Piatt



NOVEMBER ELECTION DETAILS (con't)

Vote Center Drop Off- Insert the marked ballot in the return envelope, **SIGN** the envelope and deposit it in the receptacle for vote by mail ballots outside each vote center. A list of Vote Center locations and hours is included as Appendix A

For the November 2020 Presidential General Election, El Dorado County will make the Remote Access Vote by Mail (RAVBM) system available to any voter upon request.

Vote Center Locations		
Open October 31 - November 3, 2020		
IMPORTANT: The hours listed below for each Vote Center apply to October 31 to November 2 ONLY		
ALL VOTE CENTERS WILL BE OPEN FROM 7AM TO 8PM ON ELECTION DAY, NOVEMBER 3, 2020		
Cameron Park: Cameron Park CSD	2502 Country Club Dr	8:30AM-4:30PM
El Dorado Hills: California Welcome Center **Fire Station 85	2085 Vine St, Suite 105 1050 Wilson Blvd 7455 Silva Valley Pkwy	8:30AM-4:30PM 8:30AM-4:30PM 8:30AM-4:30PM
Greenwood: California Conservation Corps	4411 State Hwy 193	8:30AM-4:30PM
Placerville: El Dorado County Building C Town Hall October 31 November 1 & 2	2850 Fairlane Ct 549 Main St	8:30AM-4:30PM 7:30AM-3:30PM 8:30AM-4:30PM
Lions Club	4701 Missouri Flat Rd	8:30AM-4:30PM
Pollock Pines: **Pollock Pines Community Center	2675 Sanders Dr	8:30AM-4:30PM
Shingle Springs: El Dorado County Child Support	3883 Ponderosa Rd	8:30AM-4:30PM
Somerset: Pioneer Park Community Center	6740 Fairplay Rd	8:30AM-4:30PM
South Lake Tahoe: **California Conservation Corps Lake Tahoe Community College	1949 Apache Ln 1 College Dr	8:30AM-4:30PM 8:30AM-4:30PM
** Facilities with ** require a face covering		
ALL VOTE CENTERS WILL BE OPEN FROM 7AM TO 8PM ON ELECTION DAY, NOVEMBER 3, 2020		

Drop Box Locations		
Open October 6 - November 3, 2020		
IMPORTANT: The hours listed below for each Drop Box are the business hours for the facility at the time of printing this packet. ALL Drop Boxes will be locked at 8PM Election Day, November 3, 2020		
Cameron Park: Cameron Park Library Gold Country Ace Hardware	2500 Country Club Dr 4121 Cameron Park Dr	24 Hour Drive Up 24 Hour Outside
Camino: Wine Country Station	3590 Carson Rd	5:00AM-11:00PM
Cool: Holiday Market Cool	5030 Ellinghouse Dr	6:00AM-10:00PM
El Dorado: Logtown Country Market	6142 Crystal Blvd	7:00AM-8:00PM
El Dorado Hills: El Dorado Hills Park and Ride El Dorado Hills Library California Welcome Center	4640 Post St 7455 Silva Valley Pkwy 2085 Vine St #105	24 Hour Drive Up 24 Hour Drive Up 9:00AM-5:00PM
Georgetown: MarVal Food Stores	6049 Front St	7:00AM-9:00PM
Placerville: El Dorado County Elections	2850 Fairlane Ct	24 Hour Drive Up
Somerset: Pioneer Park Community Center	6740 Fairplay Rd	24 Hour Drive Up
South Lake Tahoe: South Lake Tahoe Library Holiday Market South Lake Tahoe Grocery Outlet South Lake Tahoe	1000 Rufus Allen Blvd 2977 US Hwy 50 2358 Lake Tahoe Blvd	24 Hour Drive Up 7:00AM-9:00PM 7:00AM-10:00PM
ALL DROP BOXES WILL BE LOCKED AT 8:00PM ON ELECTION DAY, NOVEMBER 3, 2020		



BASS LAKE ACTION COMMITTEE QUARTERLY BOARD MEETING TO BE HELD NOVEMBER 9TH

Due to the ongoing restrictions from the State of California regarding public gatherings, it is likely that the November 9th Bass Lake Action Committee Board meeting will once again need to be held virtually, online. If a virtual meeting is necessary, Bass Lake Action Committee Members will receive an email invitation that will include the Zoom Link and instructions for attending the meeting in November.

If an in-person meeting is possible, the meeting location will be emailed to members, and published in the October Bass Lake Bulletin. All Bass Lake Action Committee members are invited to attend.

For further information about BLAC meetings and membership, please contact Vice-President John Davey at 530-676-2657, email basslakemembers@gmail.com, or visit our online membership form at <http://basslakeaction.net/members> ~

The Bass Lake Bulletin is published monthly by the Bass Lake Action Committee, 3907 Watsonia Glen Drive, El Dorado Hills, CA 95762. Copyright © 2020. All rights reserved. No part of this publication may be reproduced or transmitted in any form or by any means, electronic or mechanical, including photocopy, recording or any storage and retrieval system, without prior written permission from the Bass Lake Action Committee.

Editor Emeritus John Thomson Ph.D.

Editors
Bass Lake Action Committee Board Of Directors

blacinfo@aol.com - 530-676-2657
For additional information contact:
Vice President John Davey
916-752-8183