

# BASS LAKE BULLETIN

Vol. XV No. 11

The Voice of the Bass Lake Community

November 2017

[www.basslakeaction.org](http://www.basslakeaction.org)



## EL DORADO HILLS CSD WANTS TO BUY BASS LAKE PROPERTY

To bring its conceptual dream of a grand park project to reality, the El Dorado Hills Community Services District needs to acquire the Bass Lake property that the Rescue Union School District bought in 2013. CSD General Manager Kevin Loewen outlined the CSD’s ultimate vision, which includes ball fields and an outdoor education center, before the RUSD Board of Trustees and school district officials inside the RUSD board room during an Oct. 24 work session.

The CSD has already secured surrounding parcels to build more ball fields (see map), including Lot H in Serrano’s Village J, which Parker Development Company has given to fulfill a park obligation it owes the CSD. A rezone application to change the land designation from residential to recreation is on file with the county. If nothing else, the CSD has had plans to build a 12.5-acre public community park there.

The CSD is also in escrow on 15 acres of land, adjacent to Lot H, owned by the El Dorado Irrigation District, allowing an expansion of its Bass Lake area park plan. The property is already zoned recreational. For context, CSD’s Community Park is 46 acres and Promontory Park is 19 acres.

In 2013 RUSD purchased Bass Lake and its surrounding 58 acres, including Sellwood Field, for \$300,000 to build a future school, but in 2015 the school district purchased property at Sienna Ridge for the school instead. In March 2016 the CSD wrote a letter of intent to RUSD stating it is interested in purchasing the 142-acre property, but

the situation has been quiet until Loewen’s presentation.

A change in leadership may have been the reason for the stalled negotiations. Both the CSD and RUSD have new leadership since the land acquisitions, with Cheryl Olson hired as RUSD’s superintendent in summer 2017 and Loewen hired to replace former general manager Brent Dennis earlier this year.

Loewen noted that the Bass Lake park vision fits within the CSD’s updated 2016 Master Plan—a document that sets the framework for what the community needs and wants. During the process, more than \$140 million in projects were identified, with more ball fields, trails and safe walking routes to school all ranking high on the list. The master plan states, “Pursue management of Bass Lake as a regional park maintained through a regional public/private partnership.”

With the Bass Lake property, the CSD envisions building more ball fields, plus an outdoor learning center where the lake’s ecosystem could be studied, and passive and recreational use trails. “This could be a fantastic community resource,” Loewen said.

Loewen noted that in his former job in Kings County, he helped plan and build an outdoor education center. “It’s flourishing,” he said, and it could be a model for the CSD to emulate. Partnering with area schools and other agencies made it possible, which is something Loewen said he would like to replicate in El Dorado Hills.

“We can’t do it alone and we don’t want to,” Loewen said. “It’s better to help build community with community. We’re interested in purchasing the property from you, but we don’t want to purchase it and run

*(continued on page 2)*



## CALIFORNIA GAS PRICES HIGHEST IN AMERICA

*Thanks to New Gas Tax*

California Governor Jerry Brown’s new 12-cent-per-gallon gas tax has pushed the Golden State’s gas prices to the highest in the nation after less than a week in effect.

On November 7, [GasBuddy.com](http://GasBuddy.com) put the average price of a gallon of regular unleaded gasoline at \$3.231 in California, nearly 8 cents per gallon more expensive than the next-most-expensive state, Hawaii.

Left-leaning Politifact California notes that California’s rapid rise to the top spot fulfills the prediction of Republican George Runner, who serves on the State Board of Equalization, and who warned in April that the gas tax would make California’s gas the nation’s most expensive.

Politifact writes, “Republican George Runner predicted in April that California’s gas tax hike would catapult the Golden State’s already high fuel prices to the ‘highest in the nation,’ after the increase went into effect on Nov. 1, 2017. It appears his prediction was spot on.”

A spokesman for Runner, who is a former state lawmaker and sits on the state’s Board of Equalization, told us by email: “We are saddened that George’s prediction was correct so soon.”

*(continued on page 2)*



## BASS LAKE *(continued)*

away. We want to work with you and meet your needs too. We need to partner with a project so big.”

Loewen explained that with more new home construction coming, it's prudent to preserve open space while it's still available and noted other partnerships the CSD has, including Oak Ridge High School using the CSD pool, the Gilmore Senior Center property is a county-owned property, the Bowmen use the archery range and there are joint-use-agreements between the CSD and the Buckeye Union School District for ball fields and gyms. RUSD and CSD have agreements in place for Sellwood Field and the Jackson Elementary gym.

While a decision was not made, RUSD school board members said they would discuss what they think would best serve the families in their district in regards to the Bass Lake property.

The CSD is also seeking 42 acres of land that is county-owned, which lies on the eastern side of the Bass Lake property. The acquisition of it would be the finishing piece for the CSD's large Bass Lake Park vision.

Describing history on the Bass Lake area going back to the early 1990s, former CSD general manager and current director on the board Wayne Lowery told RUSD officials: “This could be the biggest thing in El Dorado Hills.” ~

*Credit: Julie Samrick, Village Life*

## GAS PRICES *(continued)*

Politifact notes that there are other factors in California's high price, such as a “mystery surcharge” of 20 cents per gallon that was applied after a refinery explosion in Southern California.

However, it notes that California surged past Hawaii on November 3, a mere two days after the new gas tax went into effect.

Republicans are mustering their political forces to campaign for a referendum overturning the gas tax in 2018. They are also targeting freshman Democrat State Senator Josh Newman of Fullerton, who voted for the new tax and who will now face a recall election next year. ~

*Credit: Joel B. Pollak, Breitbart News*



## NEW GUN RANGE OPENS IN PLACERVILLE

A new business has opened up in Placerville and it's a pistol—a shooting range actually.

The city now has its own state-of-the-art indoor shooting and archery range.

After a grand opening on November 4, Hangtown Range opened for shooting on November 7.

Owned by Dick Rood and family, who also own Mosquito Creek Outfitters, Hangtown Range features two five-lane shooting bays 25 yards deep, suitable for both pistols and rifles.

One of them also has a two-lane convertible virtual range where one can shoot at a projected picture with a laser or use for live fire.

For archers, there are eight lanes, 20 yards in length.

Rood says they will rent pistols and .22 caliber rifles to those without their own equipment. It will be the same inventory as they carry at Mosquito Creek Outfitters. Safety glasses and noise protectors will also be available for rent.

“The thought was that if someone wants to buy a gun, they can come to the range and try different guns out before buying one at Mosquito. That way they buy firearms they are comfortable with and like to shoot. So it ties the two together,” he said.

They also rent out bows with different draw weights and all the safety equipment that goes with them. The equipment is suitable for children as well as adults, but people can also bring their own.

There is a large reception room where people can wait and watch other shooters on several large television screens. Memberships are available, though you don't have to be a member to use the range.

Training is available to people in both archery and firearms, and there are two rooms at one end of the building suitable for classroom training.

Josh Slater, the range master, says they offer training for those wanting a concealed

carry permit, along with basic firearm proficiency training and basic civilian first aid training.

They also expect the range to be open for other events that they and others will want to host, saying they plan to have shooting events and competitions to bring people into town.

Rood said he and his family have been working on the building for two and a half years. One of the primary goals in selecting that location was its proximity to Mosquito Outfitters.

Now completely renovated, the 11,000 square feet building has undergone various uses, the last one being Sierra Tire Exchange.

Saying there is a need for an indoor range, Rood notes there's only one other public range in the county and it's outdoors and periodically gets closed for various reasons.

“Placerville could use an indoor range, and it also helps to boost our business at Mosquito Outfitters,” he said. “In the last couple years, we have yet to hear one negative comment. People kept asking, ‘Gosh, when are you going to open?’”

Rood said one of the things that encourages him is there are a lot of women who want to shoot or who want to learn how to shoot. Similarly, there are young people who want to take up the sport, hunters who want to practice, and those who want to learn to shoot for personal protection.

The cost to rent a shooting lane is \$20 an hour. Renting a handgun costs \$10.

The cost of renting a lane for a long gun is a little higher, \$25 an hour, and to rent a long gun is \$15.

The cost of using an archery lane is \$15 an hour if using your own equipment, and \$25 an hour if they provide all the equipment.

There is also an age limit. Children have to be nine or older to shoot.

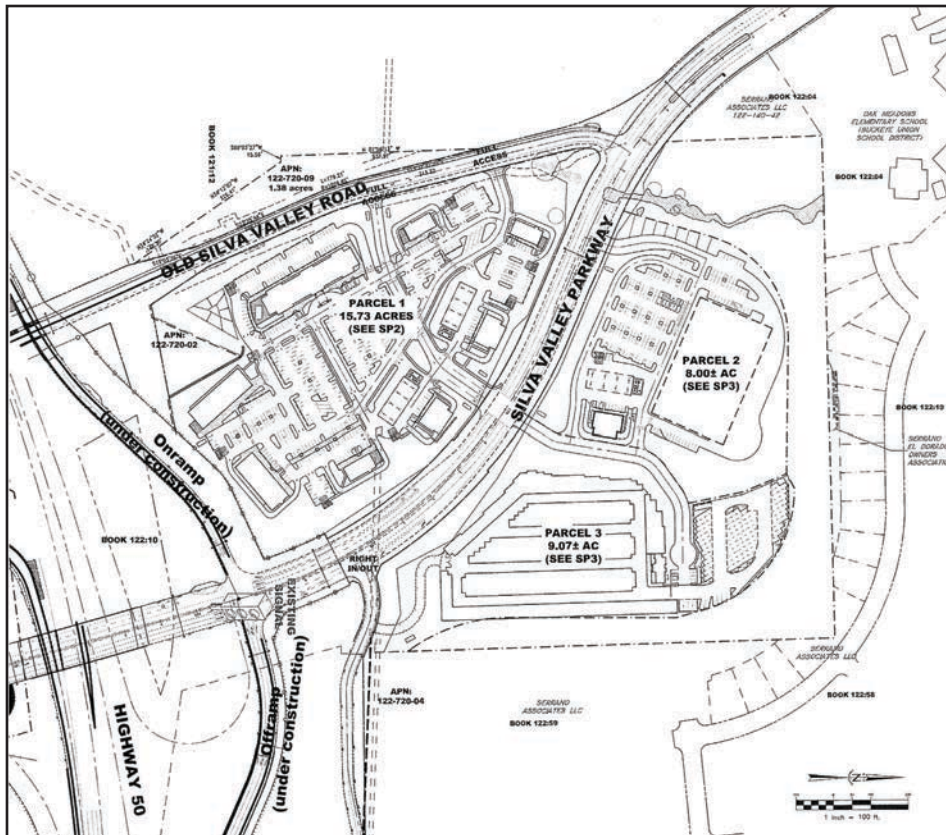
Range hours are 10 a.m. to 9 p.m. on Tuesday through Saturday, and from 10 a.m. to 5 p.m. on Sunday. Monday they are closed.

Located at 1540 Broadway in Placerville, there is plenty of parking.

“We want to make it a good safe place for the public and enjoy the sport and improve their skills. That's what we really want,” says Rood. ~

*Credit: Dawn Hodson, Mountain Democrat*





*Tentative map of proposed shopping center project*

## BIG PROJECT AT SILVA VALLEY AND HIGHWAY 50 UNVEILED

### *209,000 Square Foot Shopping Center*

An [application](#) has been submitted to El Dorado County, and posted on the project status page on October 13, 2017 by RSC Engineering Inc. on behalf of developer EDH 52 GP for a commercial center consisting of a total of 290,000 square feet in the Silva Valley Parkway and Tong Road area. The applicants are seeking three new entitlements for the project, which include a rezone, a tentative parcel map, and a conditional use permit. The complete application may be accessed by using the underlined application link above.

The owner seeks to obtain approval to build two new commercial centers (collectively, the “project”) in El Dorado Hills on property located north of Highway 50 and Tong Road, and east of Clarksville Crossing (the old Silva Valley Parkway). The project is split into two parts by the new Silva Valley Parkway. The northern portion of the property is approximately 17.07 acres and the southern portion is approximately 15.73 acres, after allowing for space for the right-of-way for roads. There is also a 7.69-acre

area on the northern portion for the right-of-way associated with the future extension of Country Club Drive from Bass Lake Road to Silva Valley Parkway. In addition, there is a 1.38-acre open space area west of Clarksville Crossing that will not be developed.

The County is reviewing the owner’s request as a single application and project for local entitlement and California Environmental Quality Act purposes. However, the owner views the northern and southern sites as two distinct projects, and each constitutes a separate “integrated development” pursuant to the El Dorado County Code. Accordingly, the owner will seek a separate wetlands permit from the Army Corps of Engineers for each site.

The maximum building area for the southern site will be approximately 110,000 square feet. This site may include a four-story hotel, fast food drive-throughs, a gas station with a car wash, a grocery store, a pharmacy, and other uses including retail, food, outdoor patio, medical offices, surgery centers, offices, technical schools, outdoor storage, and outdoor sales.

The maximum building area for the northern site will be approximately 180,000 square feet and may include self-storage, grocery, and other commercial uses. ~

*Credit: EDH Area Planning and Advisory Committee (APAC)*



## AMGEN TOUR RETURNS TO FOLSOM IN 2018

AEG Sports, owner of Amgen Tour of California, announced in October that the Amgen cycling tour will be returning to Folsom in 2018.

Next year’s event will be the 13th running of what some call America’s premier cycling stage race. It will kick off on May 13 in Long Beach, make its way to Folsom on May 18, and end in Sacramento on May 19.

“I think it reveals what a great host city Folsom has been over the years for the Amgen, the largest continental cycling event,” said Erin Gorrell, co-owner of Folsom Bike.

Throughout seven stages over seven days, the world’s best cyclists will cover more than 600 miles of roadways and highways over mountains and along coastlines. The 2018 edition will mark the third time in race history that the cyclists will travel the Golden State from south to north.

The local Amgen Tour of California Women’s Race, co-sponsored by cycle component maker SRAM, will run concurrently May 17-19, covering upward of 150 miles during three stages.

The venues of the Women’s Race include Elk Grove on May 17, followed by South Lake Tahoe, and Sacramento will host the final race.

The Amgen annual cycling events carry the distinction of being the only U.S. races on the Union Cycliste Internationale (UCI) WorldTour cycling calendar, and attract some of the most renowned cyclists and teams in the world. The 2018 Amgen is the 11th consecutive year the event has featured an international platform of both men’s and women’s racing.

For more information on the tour, go to [amgen.com](http://amgen.com). ~

*Credit: Rachel Zirin, Folsom Telegraph*





## PLACERVILLE CHP LAUNCHES SAFETY CAMPAIGN

### *Impaired driving targeted*

The Placerville office of the California Highway Patrol is implementing a regional impaired driving campaign in an effort to save lives. To accomplish this mission and reduce traffic collisions involving impaired drivers, the CHP Placerville area office will



Leaves

How silently they tumble down  
And come to rest upon the ground  
To lay a carpet, rich and rare,  
Beneath the trees without a care,  
Content to sleep, their work well done,  
Colors gleaming in the sun.

At other times, they wildly fly  
Until they nearly reach the sky.  
Twisting, turning through the air  
Till all the trees stand stark and bare.  
Exhausted, drop to earth below  
To wait, like children, for the snow.

—Elsie N. Brady

use a federal grant to conduct a regional campaign focusing on impaired drivers in El Dorado County.

The 12-month project began October 1 of this year and will end September 30, 2018.

The local CHP office is deploying officers on enhanced enforcement, particularly on Highway 50, state Highways 49 and 193, and along problematic areas such as Green Valley, Pleasant Valley, Sly Park and Grizzly Flat Roads.

“With a proactive approach to raise awareness and eliminate driving under the influence of alcohol or drugs, we can continue to reduce the number of collisions occurring in El Dorado County,” said CHP Lieutenant Matthew Stover, commander of the Placerville area office. “This grant will help keep the momentum going by removing impaired drivers before they kill or severely injure themselves or others.”

Statistics from the CHP’s Statewide Integrated Traffic Records System show there were 140 people killed and injured in 99 traffic collisions involving impaired drivers on CHP jurisdictional roadways within El Dorado County between October 1, 2014, and September 30, 2015.

This CHP traffic safety effort will also include a community-based task force and public awareness and education campaign to help reinforce knowledge of the dangers of driving while impaired.

Funding for this program was provided by a grant from the California Office of Traffic Safety through the National Highway Traffic Safety Administration. While alcohol remains the worst offender for DUI crashes, the CHP supports a new effort from OTS that aims to drive awareness that “DUI Doesn’t Just Mean Booze.” Prescription medications and marijuana can also be impairing by themselves, or in combination with alcohol, and can result in a DUI arrest. ~

Bass Lake Action Committee  
501 Kirkwood Court  
El Dorado Hills, CA 95762



## BLAC BOARD SETS DECEMBER ANNUAL MEETING

The Annual Meeting and Christmas Party of the Bass Lake Action Committee will be held on December 4, 2017, at the home of John and Fran Thomson, 501 Kirkwood Court in Woodridge, El Dorado Hills, 530-677-3039. The election of candidates for the BLAC Board offices for 2018 will be an item on the agenda.

BLAC Members and invited guests will be receiving their invitations shortly.

For further information about BLAC meetings and membership, please contact Vice President Kathy Prevost at 530-672-6836. ~



The *Bass Lake Bulletin* is published monthly by the Bass Lake Action Committee. Copyright © 2017. All rights reserved. No part of this publication may be reproduced or transmitted in any form or by any means, electronic or mechanical, including photocopy, recording or any storage and retrieval system, without prior written permission from the Bass Lake Action Committee.

John E. Thomson, Ph.D., Editor  
doctorjet@aol.com - 530-677-3039

For additional information contact:  
Vice President Kathy Prevost  
blacinfo@aol.com - 530-672-6836