



# BASS LAKE BULLETIN

Vol. XII No. 2

The Voice of the Bass Lake Community

March 2014

[www.basslakeaction.org](http://www.basslakeaction.org)



California Highway Patrol cars respond to the latest wreck on Bass Lake Road. The white car off to the left was involved in the collision.

## RASH OF TRAFFIC ACCIDENTS ON BASS LAKE ROAD LATELY

A two-car collision on Monday afternoon, March 3 at 3:00 PM was the latest in a spate of accidents on Bass Lake Road, several of which have occurred at the infamous curve that has been nicknamed by some as "Dead Man's Curve" (see picture). Rain and the resulting slippery road was blamed for this particular mishap; fortunately no one appeared to be injured as a result.

Last week a Woodridge resident noticed that the CHP had responded to another wreck at the curve; obviously a car had left the road at the curve and hit a tree, since the front end was severely damaged. The Bulletin was unable to determine if anyone was injured.

And a single-vehicle motorcycle accident occurred on Bass Lake Road near Bridlewood Drive on Saturday, February 22 around 2:30 PM. The victim was transported by Cal Star medical helicopter from El Dorado Hills Fire Station 86, to Sutter Roseville with unknown injuries. ~

## SILVER SPRINGS PARKWAY WORK DONE

*Road to Nowhere to Remain Closed to Traffic*

The first phase of construction of the new Silver Springs Parkway is nearing completion. The project includes construction of Silver Springs Parkway and a new three-way signalized intersection east of Pleasant Grove School. The turn lanes at the intersection of Green Valley Road and Deer Valley Road were completed a while ago.

Silver Springs Parkway is a 2-lane divided road designed to access the future Silver Springs subdivision. The subdivision will lie generally between the new parkway and the western edge of Sierra Crossing.

The new parkway includes left turn pock-ets, bus pullouts, bike lanes and sidewalks. This particular project completes the north-erly one-mile portion of the parkway, which will end a half-mile short of Bass Lake Road.

Barricades will be erected at the north end to keep traffic off the new one-mile section, and the final paving will be applied and the road opened only after the start of the Silver Springs housing development.

A future phase of the new parkway will extend the parkway the half-mile south to

*(continued on page 3)*



## COUNTY PRIMARY RACES HEATING UP

The California direct primary election will be held on June 3, 2014. El Dorado County residents will vote for Assessor, Auditor-Controller, District Attorney, Recorder-Clerk, Sheriff, Surveyor, Superintendent of Schools, Treasurer-Tax Collector, and Superior Court Judges in Offices 1,3,4,5 and 6.

Voters will also choose new County Supervisors in District 4, now held by Ron Briggs, and District 5, now held by Norma Santiago. Both Briggs and Santiago are termed-out at the end of this year.

So far, the most crowded field is for District 4 Supervisor. Potential candidates for that slot include Scott McNeil of the Cameron Park Community Services District board, educator Tim Palmer from Cool, businessman Mike Pettibone from Shingle Springs, businessman Michael Ranalli from Lotus, rancher Dave Souza from Garden Valley, private investigator Winston Pingrey from Shingle Springs, businessman Howard Penn from Coloma, and community activist Lori Parlin from Shingle Springs.

*(continued on page 3)*

### ATTENTION READERS:

WOULD YOU LIKE TO HAVE YOUR OWN ELECTRONIC COPY OF THE BULLETIN AS SOON AS IT COMES OFF THE PRESS? DROP US AN EMAIL AT [BLACINFO@AOL.COM](mailto:BLACINFO@AOL.COM) AND WE WILL SEND YOU A LINK WHEN THE BULLETIN IS AVAILABLE.





### PRESIDENT'S LETTER

Hello All,

The fact that EID may sell Bass Lake to the county made me curious as to the history of that body of water.

Research has shown me that the American Reservoir, the reservoir we now call Bass lake, was built in 1858 as part of the large ditch or canal system that brought essential water to the gold diggings during the Gold Rush. Without a steady supply of water with which to wash the gold out of the pay dirt, the majority of gold diggings would have been unworkable.

American Reservoir was the western terminus of the famous Crawford Ditch, which brought water from the North Fork of the Consumnes River around Sly Park to Diamond Springs, El Dorado, and then on to the American Reservoir. A distribution ditch was built from the reservoir over to the town of Clarksville for both mining and irrigation purposes.

My research is continuing, and I am now looking at the period when James Nicol owned and operated the Bass Lake Resort on the shore of the lake from the 1930s to around 1954.

EID later acquired the lake and rebuilt the dam so it could be a part of their water system.

If anyone has any knowledge of that period, I would be glad if you would contact me. Any information, especially photographs, would be very helpful to my research.

In any case, I am sure we are all glad for the recent rains, which have done a good job of refilling the lake, which was getting pretty low. Let's all hope that we get a lot more rain this spring!

Sincerely,

*John Thomson*

President  
Bass Lake Action Committee



Map showing the roughly 150 acre Bass Lake property on the left and the 41 acre parcel already owned by the county on the right.

### COUNTY MAY BUY BASS LAKE PARCEL FROM EID

At the Board of Supervisors' meeting on February 11, 2014, the El Dorado County Board of Supervisors unanimously voted to enter into negotiations to purchase the Bass Lake property from the El Dorado Irrigation District.

The Parks Division of the Chief Administrative Office recommended that the Board consider authorizing the Department to enter into negotiations with the El Dorado Irrigation District (EID), the owner of parcel 115-400-12-100 at 3240 Bass Lake Road for the purchase of 151.70 acres; and appointing Russ Fackrell as the real estate negotiator on behalf of the County for the negotiation. The funding would be from the General Fund, and the fiscal impact is unknown at this time. The Facilities Division will initiate negotiations. The County contact will be Vickie Sanders of the Chief Administrative Office.

The procedural motion was made by Supervisor Nutting, seconded by Supervisor Briggs to approve the item, and the vote was five ayes: Briggs, Santiago, Mikulaco, Veerkamp and Nutting.

Later in March, the Closed Session agenda for the February 25, 2014, meeting of the Board of Supervisors had an agenda item that read: "Conference with Real Property Negotiator. Instructions to its negotiator regarding the real property described as 3240 Bass Lake Road, Assessor's Parcel Number

115-400-12-100. The person or persons with whom the negotiator may negotiate El Dorado Irrigation District. Instructions to negotiator will concern price and term of payment. Russ Fackrell will be the negotiator on behalf of El Dorado County."

Earlier talks between the Rescue School Board and the EID to buy the property have apparently gone nowhere, though an earlier article in the Bulletin suggesting that the negotiations were stalled was met with a vigorous denial from both Rescue District and EID. ~



**Happy  
St. Patrick's  
Day**

## ELECTIONS *(continued)*

In the District 5 Supervisor’s race, potential candidates are project manager Gerri Grego, businesswoman Sue Novasel, and city council member Angela Swanson, all from the South Lake Tahoe area.

Candidates for Superior County Judge include Vicki Ashworth, David Combella, Dylan Sullivan, Joe Hoffman, Steven Bailey and Joseph Weinberger.

The number of incumbents facing challengers this year is increasing. Bill Schultz, El Dorado County Recorder-Clerk, is facing challenger Chris Amaral from El Dorado Hills. Auditor-Controller Joe Harn, CPA, will face Mike Owen, CPA; and Treasurer-Tax Collector C.L. Raffety, CPA, will face term-out El Dorado County Supervisor Ron Briggs.

In the primary election, a candidate wins an office if he or she garners at least 51% of the vote; otherwise, the two candidates who get the most votes go on to compete in the general election in November.

Unopposed incumbents include Jeremy Meyers for Superintendent of Schools, Karl Weiland for Assessor, Vern Pierson for District Attorney, John D’Agostini for Sheriff-Coroner-Public Administrator, and Rich Briner for Surveyor. ~

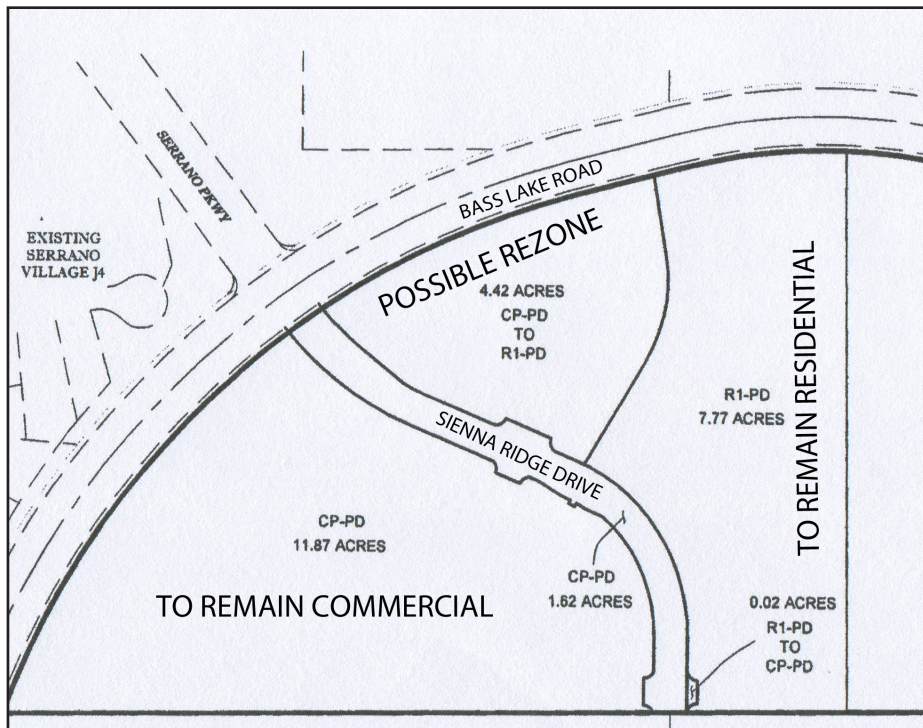
*Credit: Dawn Hodson, Mtn. Democrat.*

## SILVER SPRINGS *(cont.)*

connect with Bass Lake Road at a new intersection near Madera Way. According to sources at the county, right-of-way issues are holding up construction of the southern portion of the parkway.

The cost to construct the one-mile northern segment of Silver Springs Parkway and the signalization at Green Valley Road was \$7.6 million. The intersection of Green Valley Road and Deer Valley Road cost \$1.3 million. The construction of the southern end of the parkway from the dead-end to Bass Lake Road is budgeted to cost \$7.2 million at some time in the future. That amount includes a new intersection at Bass Lake Road.

Interested persons may contact Dave Spiegelberg, County of El Dorado, CDA, Construction Division at 530-642-4940 for further information. ~



Map showing area that may be rezoned and adjacent parcels

## VILLAGE J REZONE REQUEST DELAYED

*Planned shopping center may shrink*

Parker Development, through its affiliate Serrano Associates, has applied for a zoning change for the currently commercially zoned 4.42-acre parcel on the southeast corner of Bass Lake Road and Sienna Ridge Drive. Parker would like to rezone the parcel for residential use rather than commercial.

Up to now, that parcel had been planned to be the second phase of the commercial area at that intersection. The first phase, a larger 11.87-acre parcel across the street on the southwest corner of Bass Lake Road and Sienna Ridge Drive, includes tentative plans for a supermarket, various shops, and other commercial activity, and will remain zoned commercial.

The El Dorado County Planning Commission and the Board of Supervisors must approve the zoning change. The rezone application was to be considered by the Planning Commission on February 27, 2014, but Parker requested a postponement until April 10, 2014, for the application to be considered.

Contacted by the Bulletin, Parker’s Director of Government Relations, Kirk Bone, indicated that the rezone is being applied for because there is doubt as to whether there is a demand for as much commercial space as was originally planned. He explained that the reason Parker asked for the delay

on the application was to hire a consultant to find out how much commercial business the surrounding area can feasibly support.

Under the terms of the original El Dorado Hills Specific Plan that was approved in 1988, 45 acres south of Bass Lake was to be zoned commercial, for businesses such as grocery stores, drug stores, variety stores, beauty or barber shop, restaurant or coffee shop and cleaners. Over the years, this allowance for commercial zoning has been whittled down to the present 17.61 acres.

The Bulletin is aware that investors own parcels along Highway 50 at both Bass Lake Road and Silva Valley Parkway that they would like to eventually rezone into commercial property for shopping centers.

Retail development has become closely tied to residential development and the lag between the two has narrowed. Rather than risk waiting too long for a suburban community to fill in, some retail developers follow the first wave of residential growth to communities where they think more growth will occur in the future. On the other hand, developers will hesitate before investing in an area where growth has slowed, or future growth is uncertain.

The up-front funding requirements of the Public Facilities Funding Plan for the Bass Lake Hills Specific Plan, which covers both sides of Bass Lake Road from Serrano to Highway 50, is such that it is doubtful whether that area will be developed in the near future. That casts doubt on any retail activity on Bass Lake Road for a while. ~



## PROPANE PRICES MODERATE AS COLD WEATHER EASES

Many homeowners who heat their homes with propane have become sensitive to its recent price fluctuations. The roller-coaster price of propane over the last few months has reflected an unusual demand for propane in other parts of the US due to unusually cold weather there.

In the Midwest, propane is used for both drying agricultural crops and heating homes and businesses. Due to cold weather seen over the past weeks, propane supplies in the Midwest remain tight, but prices have eased.

Overall US propane prices, as tracked

by the US Energy Information Administration, showed that on March 3 the average wholesale rate was \$1.508 per gallon and the average retail price as \$3.302.

The wholesale rate at the Mont Belvieu, Texas, hub as of March 5 was \$1.0686 per gallon. Last year at this time it was \$0.8413.

The March 7 price for Bass Lake homeowners who contract with JS West Propane was \$2.21 per gallon, based on a fifty-cent markup over the wholesale price plus up to ten cents per gallon transportation charge. Last month at the same time the JS West contract price was \$2.50 per gallon. ~



Old Roman coin  
depicting Julius Caesar

## THE IDES OF MARCH

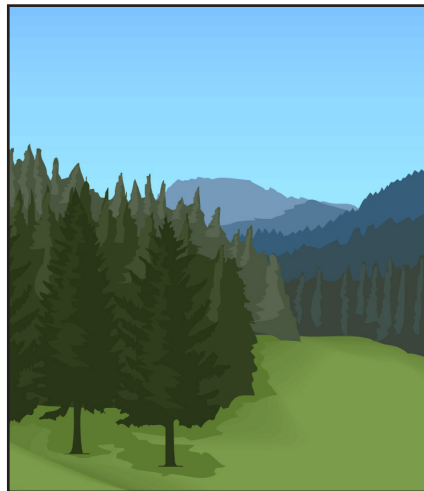
The Ides of March is a day on the old Roman calendar that corresponds to 15 March. It became notorious as the date of the assassination of Julius Caesar in 44 BC.

The Romans did not number days of a month sequentially from the first through the last day. Instead, they counted back from three fixed points of the month: the Nones (5th or 7th, depending on the length of the month), the Ides (13th or 15th), and the Kalends (1st) of the following month. The Ides occurred near the midpoint, on the 13th for most months, but on the 15th for March, May, July, and October. The Ides were supposed to be determined by the full

moon, reflecting the lunar origin of the Roman calendar.

In modern times, the Ides of March is still known as the date on which Julius Caesar was assassinated. Caesar was stabbed to death at a meeting of the Senate. According to Plutarch, a seer had warned that harm would come to Caesar no later than the Ides of March. On his way to the Theatre of Pompey, where he would be assassinated, Caesar passed the seer and joked, "The ides of March have come," meaning to say that the prophecy had not been fulfilled; to which the seer replied, "Aye, Caesar; but not gone." This meeting is famously dramatised in William Shakespeare's play Julius Caesar, when Caesar is warned by the soothsayer to "beware the Ides of March."

Caesar's death was a closing event in the crisis of the Roman Republic, and triggered the civil war that would result in the rise to sole power of his adopted heir Octavian (later known as Augustus). Under Augustus, the power of the Roman Senate continued to decline, and the rise of Imperial Rome controlled by an emperor began. ~



Smells

Through all the frozen winter  
My nose has grown most lonely  
For lovely, lovely, colored smells  
That come in springtime only.

The purple smell of lilacs,  
The yellow smell that blows  
Across the air of meadows  
Where bright forsythia grows.

The tall pink smell of peach trees,  
The low white smell of clover,  
And everywhere the great green smell  
Of grass the whole world over.

— Kathryn Worth

The Bass Lake Bulletin is published monthly seven to ten days after the regular monthly BLAC meeting, by the Bass Lake Action Committee, El Dorado Hills, California Copyright © 2014. Permission to reproduce

unabridged articles is granted if appropriate attribution is given to the Bass Lake Bulletin

John E. Thomson, Ph.D.  
President and Editor  
doctorjet@aol.com  
530-677-3039

For additional information  
see our website, [basslakeaction.org](http://basslakeaction.org)  
or contact

Vice President Kathy Prevost  
[blacinfo@aol.com](mailto:blacinfo@aol.com)  
530-672-6836

Bass Lake Action Committee  
501 Kirkwood Court  
El Dorado Hills, CA 95762