



**BASS LAKE
REGIONAL PARK**

EL DORADO COUNTY PARKS

Park Planning Workshop

- The Parks Division worked with local park enthusiasts and neighbors to collaborate on a park design that would be an asset to the community for years to come.
- The following presentation highlights the activities that occurred during the workshop and how the current park design was developed.

Workshop Orientation

Neighbors and Park enthusiasts met at the Bass Lake Fire Station early Saturday morning for a site tour and design charette workshop



Opportunities/ Constraints Map

Participants were provided with information describing the physical parameters of the future park site.

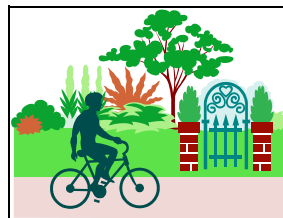
This information included:

- Slope analysis
- Property boundaries
- Current & future roadways
- Presence of environmentally sensitive areas



The Guide Book was distributed to all participants. The Guide directed people to different sites throughout the property and encouraged folks to write down what struck them as interesting, important or necessary within the property.

BASS LAKE REGIONAL PARK
El Dorado County Parks



“TAKING PART”
SITE AWARENESS TOUR

October 6, 2001

Name _____

Site Awareness Tour



Bass Lake



Touring Bass Lake Area



After the site tour it was back to the fire station to design the park!



WORKSHOP ACTIVITIES

Once the group returned to the fire station they were randomly divided into three groups. Each group then went through a series of exercises to determine what they liked and disliked about the site, what issues they saw as most important, and what type of facilities should be developed.

GROUP PRESENTATIONS



Each group was then asked to present their views on the different exercises.

During the presentations, participants began to see the similarities in each of the concepts and worked toward building consensus.

TOP “LIKES”

❖ **Location**

❖ **Flat / Topography**

❖ **Water**

❖ **Oaks**

TOP “DISLIKES”

❖ **Fence Restriction**

❖ **Access**

❖ **Expensive/Limited
Development**

TOP “ISSUES”

❖ **Access**

❖ **Neighbors**

❖ **Politics - Joint uses**

❖ **Costs**

TOP FACILITIES

❖ **Trails**

❖ **Sports Fields**

❖ **Picnic Areas**

❖ **Community Center**

❖ **Playground**

❖ **Frisbee Golf**

Design Charette

The next exercise was to design and place park facilities. Groups were given maps of the park site and scale models of different park features.



Workshop



Design Presentation

Groups were then asked to present their ideal park plans.

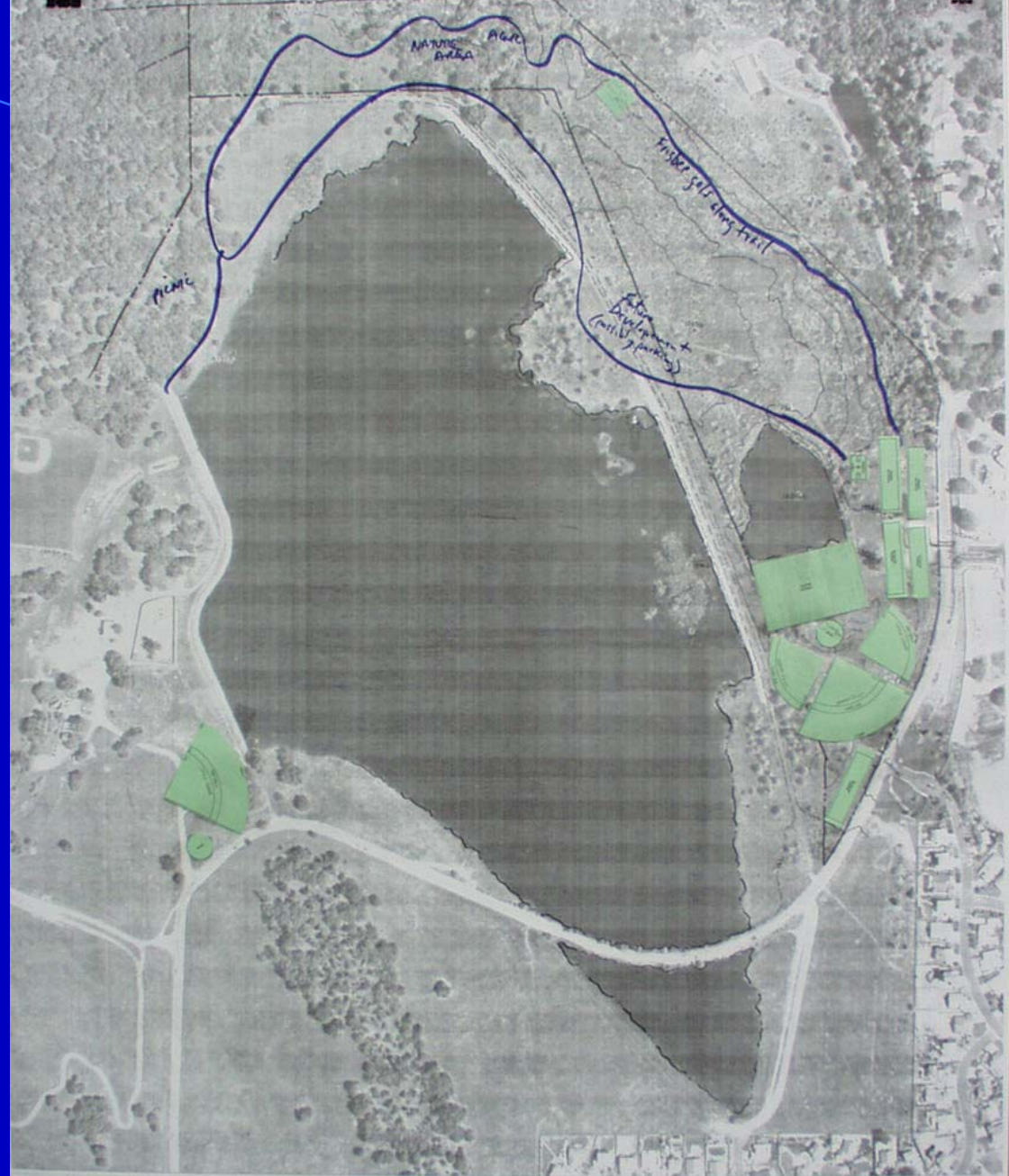


FIELD FACILITIES

- Drive Area
- Student Playground
- Picnic Tables
- Restrooms
- Community Center

GROUP 1

This group centered facility development to the southeastern corner of the property near Bass Lake Road. They show a trail and disc golf course on the northern portion. One interesting feature proposed was the development of a ballfield on the west side of the lake.



BASS LAKE
REGIONAL PARK
COUNTY OF EL DORADO

Robert Bruce
Joe D. R.
Bill Cronin
Bill Hooty

WORKSHOP BASE MAP
GROUP

OCTOBER 6, 2001

RTM
DESIGN GROUP, INC.
10000 W. 100th St., Suite 100
Overland Park, KS 66214
Tel: 913.241.1111
Fax: 913.241.1112

GROUP 2

This group placed facility development throughout the county owned portion of the site. A disc golf course was located in the northwest corner and trail connections toward El Dorado Hills and Cameron Park were also described.



BASS LAKE
REGIONAL PARK
COUNTY OF EL DORADO

GROUP 2
TOM STRUIZ
Chris and Brooke
MIKE SANDNER
Shane Ryerson

WORKSHOP BASE MAP
GROUP

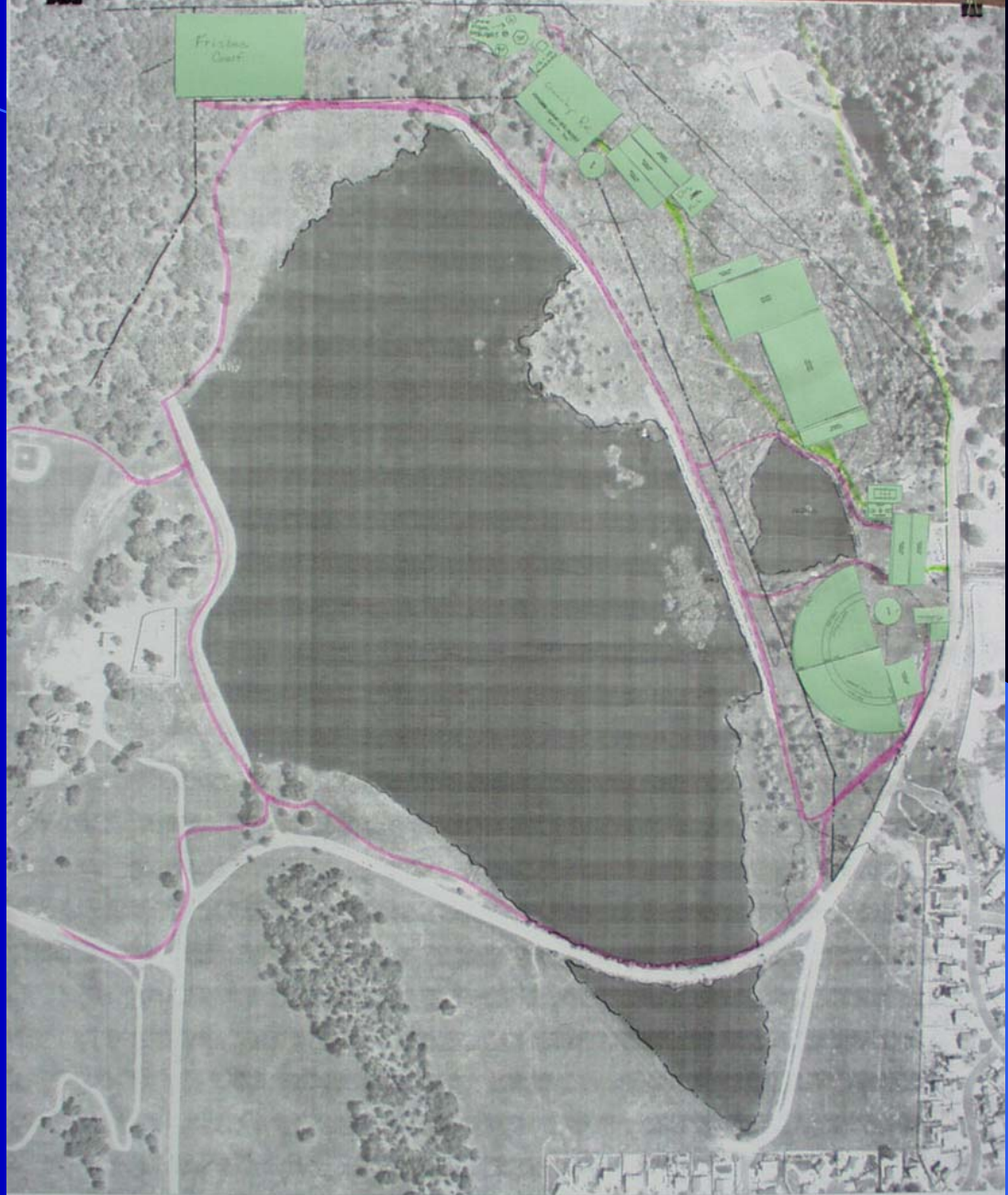
OCTOBER 6, 2001

EJM
DESIGN GROUP, INC.



GROUP 3

The third group placed facilities throughout the park as well. This group located a nature center and additional parking on the northeast corner of the property. Group 3 also placed a high priority on trails that connect features within the park and connect the park to adjacent neighborhoods.



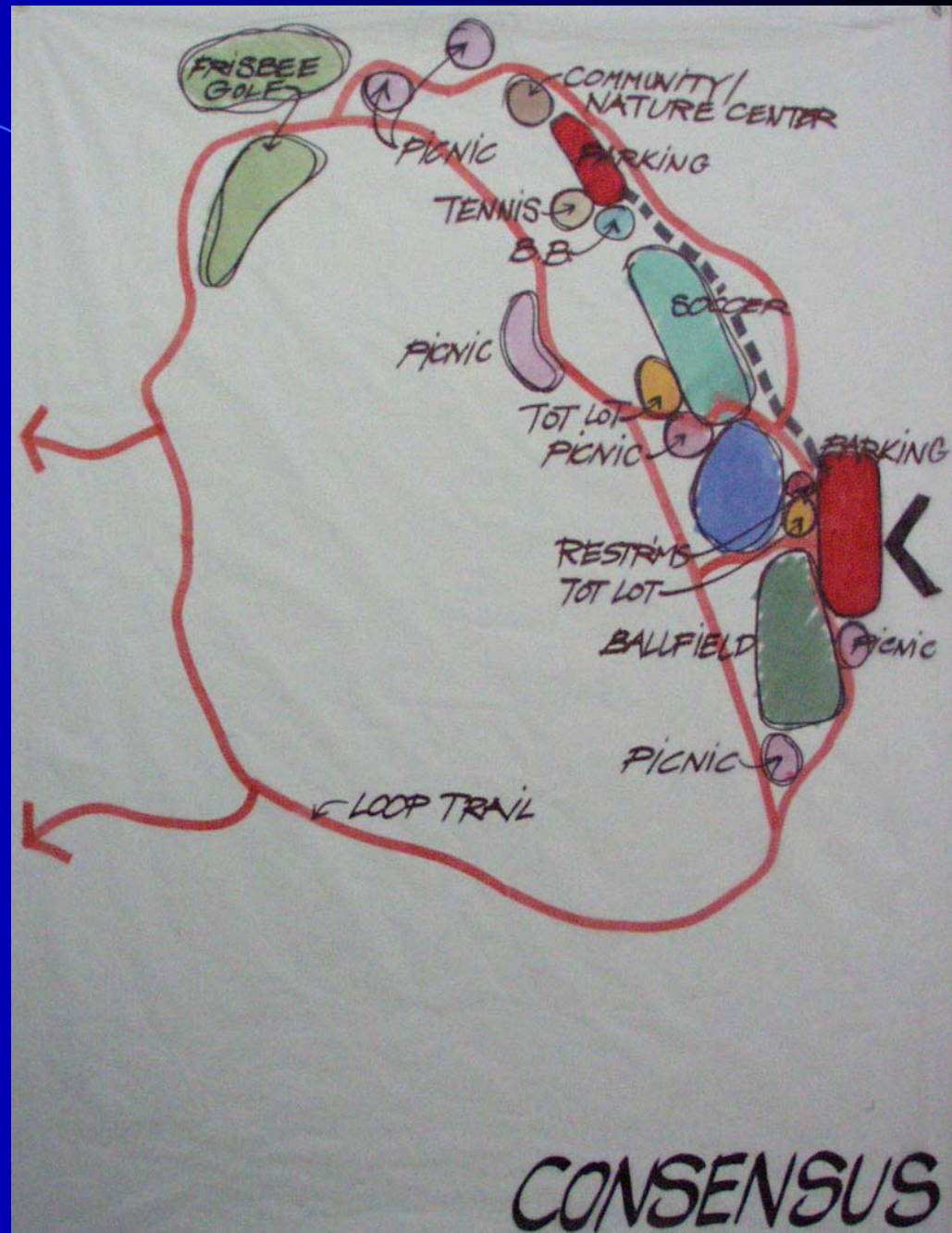
BASS LAKE
REGIONAL PARK
COUNTY OF EL DORADO

WORKSHOP BASE MAP
GROUP 3
OCTOBER 6, 2001
RJM
DESIGN GROUP, INC.
A DIVISION OF THE OFFICE OF LAND MANAGEMENT



CONSENSUS PLAN

The design consultant took the three designs and incorporated each concept into one consensus plan. This plan was presented at a second workshop where additional comments were solicited. A conceptual plan has now been approved by the County Board of Supervisors and will be used as the project description for environmental analysis.



Plan





Plan



Plan

Plan



Plan

